



**CENTRE SCIENTIFIQUE ET TECHNIQUE DU  
BATIMENT**

**84 avenue Jean Jaurès  
CHAMPS-SUR-MARNE  
F-77447 MARNE LA VALLEE CEDEX 2  
(France)**

[www.cstb.fr](http://www.cstb.fr)

# **Rules for granting Equipment Sanitary Conformity Notice (ACSE in French)**

Identification No.: RA ACSE

Brought into application: 29/04/2014

Revision No. 03 approved by the Technical Department of CSTB on April 29, 2014  
Cancels and replaces any previous version

**HYDRAULICS AND SANITARY EQUIPMENT DEPARTMENT**

Tapware and Sanitaryware Division



## SOMMAIRE

Introduction.....	4
1 Purpose and field of application.....	4
2 Reference documents.....	4
3 Procedure – Initial examination request .....	4
3.1 Information request.....	4
3.2 Compiling the ACSE application file.....	5
3.3 Receipt and registration of applications .....	5
3.4 Review of the ACSE service .....	5
4 ACSE renewal case .....	6
5 ACSE maintenance for another trademark .....	6
6 Production site audit: .....	6
7 The ACSE .....	7
7.1 Content of the ACSE .....	7
7.2 Validity duration of the ACSE .....	7
7.3 Marking .....	7
7.4 Publication .....	7
7.5 On-site inspection .....	8
8 Responsibilities and obligations .....	8
9 Confidentiality.....	8
10 The rates .....	8
10.1 Services.....	8
10.2 Collection for services .....	9
11 List of appendices.....	9
1 Applicant’s identification.....	11
2 Description of the renewed ACSE.....	11
1 Identification of the manufacturer of the original equipment .....	12
2 Identification of the distributor .....	12

## Introduction

The specifications of sanitary protection apply to all the equipment connected to the interior system for distribution of water intended for human consumption (examples of equipment items: washing machine, spray-equipped toilet lid, basin cleaning unit, etc.).

To prevent the pollution of water intended for human consumption, it is essential that each equipment item connected to the network contain a backflow prevention device.

Equipment Sanitary Conformity Notice (hereafter referred to as "ACSE") is a document drawn up by CSTB indicating that the equipment meets the requirements of the regulations relating to the protection of the potable water system.

## 1 Purpose and field of application

The purpose of this document is to define the procedures for assessing and verifying the equipment for the granting of an Equipment Sanitary Conformity Notice. The ACSE:

- applies to all the equipment connected to the interior system of distribution of water intended for human consumption;
- certifies the conformity of protection devices built into the equipment;
- certifies that the information pertaining to the installation, servicing and maintenance given on the technical documentation, ensures the reliability of protection over time;
- does not guarantee the proper operation of the equipment and does not deal with quality-related aspects (performance, durability, etc.);
- is not a substitute for sanitary conformity attestations for materials in contact with potable water intended for human consumption;
- does not represent a product certification in line with articles L.115-27 to L.115-32 and L-115-1 to L-115.3 of the French consumer code.

## 2 Reference documents

- Decrees 2007-49 of January 11, 2007 relative to the sanitary safety of waters intended for human consumption;
- Standard EN 1717, "Protection against pollution of potable water in water installations and general requirements of devices to prevent pollution by backflow";
- Certification rules NFO45 "Antipollution of water installations";
- French, European and international standards relating to protection devices.

## 3 Procedure – Initial examination request

### 3.1 Information request

All applicants may contact CSTB to obtain information relating to the issue of an ACSE, and request to be sent an ACSE standard application form.

The ACSE standard initial application form (attached in Appendix 1) is also available for download from the CSTB website at the following address: [www.cstb.fr](http://www.cstb.fr)

Upon receipt of an application for an ACSE, CSTB sends the following to the applicant by mail:

- Copy of these granting rules including the standard application form and the detailed list of information to be provided;
- Cost of the procedure;
- Cost of the tests and inspections carried out if necessary.

### 3.2 Compiling the ACSE application file

The ACSE application form, filled out by the applicant is to be sent by mail to:

CSTB  
Direction Hydraulique et Equipements Sanitaires - HES  
Division Robinetterie et Appareils Sanitaires - RAS  
84 avenue Jean Jaurès – CHAMPS-SUR-MARNE  
F-77447 MARNE-LA-VALLEE CEDEX 2 (France)

Contact: Mr Jean-Marie FRANCO  
Tel.: 01 64 68 84 80  
Fax: 01 64 68 84 72  
Email: jean-marie.franco@cstb.fr

The initial examination request form (cf. Appendix 1) shall be accompanied by a technical file consisting of the following items:

- Description of the equipment (operation, reference, type, etc.);
- General diagrams and hydraulic drawings of the equipment, indicating the location of the protection device and of the connection point to the drinking water system;
- Description of the protection device (reference, type, brand certification, etc.);
- Design diagrams/drawings for the part concerning the protection device;
- Compliance with the regulations pertaining to the materials in contact with potable water (ACS [sanitary conformity notice] for the equipment or for its components in contact with potable water).
- Adequate technical documentation, aiming to demonstrate equipment conformity with the sanitary protection requirements. This documentation shall at least be written in French and shall include at least the following:
  - A general diagrammatic description of the equipment;
  - Installation, servicing and maintenance rules for the equipment to ensure reliability of the protection device over time;

### 3.3 Receipt and registration of applications

Upon receipt of the duly completed and signed ACSE application form, CSTB opens a dossier review with the application date.

CSTB conducts a preliminary review of the dossier supplied by the applicant, and formally records the ACSE application when the dossier comprises all of the items requested in § 3.2.

If during this preliminary review, missing documents or additional information are required, CSTB then asks the applicant who will have a period of one month to provide them to CSTB.

### 3.4 Review of the ACSE service

Based on the information forwarded by the applicant, CSTB examines the ACSE application:

- Analysis of the equipment (cf. Appendix 5):
  - Assessing the risk of pollution;
  - Determining the most appropriate protection devices.
- Checking the protection device built into the equipment (cf. Appendix 6):
  - Conformity according to the applicable product standards for the non-certified devices;
  - Proof of conformity with NF 045 certification rules.
- Analysis of the technical documentation supplied by the applicant. Special attention will be given to the rules of installation, maintenance and servicing of the equipment, including those of the built-in protection device.

Should the examination of the dossier require carrying out additional tests according to the standards in force to check the conformity of the protection devices, CSTB will so notify the applicant and forward a quote to the latter indicating the estimated cost for these tests, as well as informing the applicant, depending on the time needed to perform these additional tests, of the extension to the review phase, if any.

Following the tests, a report shall be drawn up and sent to the applicant.

At the end of this review phase, and when the analysis of the conformity of the equipment connected to the water system is positive, CSTB shall issue an ACSE.

#### **4 ACSE renewal case**

The application for renewal is left to the initiative of the applicant. This application for renewal shall be submitted at least three months before the end of the current notice validity period.

The holder forwards the renewal request (cf. Appendix 2) to CSTB supported by any pertinent technical information relating to its dossier.

Either he shall declare the alterations made to the equipment, since the first evaluation made by CSTB, pertaining, among other things, to:

- connection to the equipment's water system;
- protection element.

Or the holder solemnly swears not having altered the equipment since the first evaluation using the standard letter (cf. Appendix 4).

CSTB reviews the application for renewal, and, in the event of a favourable analysis, issues a new ACSE, valid for another 3-year period. The ACSE number remains the same as the initial ACSE. But, this number will be incremented of the year of renewal in the certificate issued.

If the protection element is not NF-certified, the validation tests will systematically be carried out again at each ACSE renewal.

If the renewal application does not reach CSTB within the 3-month period mentioned above, CSTB will review this application but reserves the right to withdraw the equipment reference from the list of equipment holding an ACSE at the date of the end of validity of the initial ACSE, if at this expiry date, CSTB has not yet come to a decision as to its renewal.

At the date of the end of validity of the initial ACSE, if no renewal application has been received, CSTB informs the holder that the reference to the equipment has been withdrawn from the list of equipment holding an ACSE published by CSTB and requests the holder to indicate the measures taken to eliminate all references to the ACSE (technical documentation, etc.). CSTB reserves the right to carry out inspections (on the manufacturer's premises, at sales points, etc.).

#### **5 ACSE maintenance for another trademark**

Maintaining ACSE is a decision notified by CSTB by which the use of ACSE is granted to an equipment marketed under another trademark without any major modification to the equipment it originates from. It is acceptable to provide a few presentation modifications that have no functional effect.

The application shall be submitted in conformity with the model given in Appendix 3 to those granting rules. A list of the modifications made to the original equipment shall be included with the application.

#### **6 Production site audit:**

During the initial ACSE dossier examination, CSTB reserves the right to conduct an audit of the production site.

During the ACSE period of validity, an audit of the production site will be arranged.

The audit duration is normally half a day, but it can vary depending on the products or on the organisation of the manufacturing unit.

The purpose of the audit is to make sure that the inspection procedures and means implemented by the manufacturer make it possible to ensure conformity to the technical files supplied to CSTB and meet the ACSE requirements (in terms of marking, references, lists, etc.).

The manufacturer shall provide its assistance for the proper execution of these inspection audits, particularly by making the necessary ways and means available to CSTB.

During the audit, the points listed below shall be verified, where relevant:

- Infrastructures and Working Environment
- Acceptance inspection
- Product production and inspection during production
- Handling non-compliant products
- Handling customers complaints
- Marking and packaging
- Technical documentation
- Action taken following CSTB's observations when examining the file

The manufacturer shall be able to submit a record of the corrective measures adopted, in particular if the complaints have revealed a production anomaly.

## **7 The ACSE**

### **7.1 Content of the ACSE**

The ACSE includes in particular:

- Identification number for the equipment assessed (assigned by CSTB);
- Instructions, technical standards or other applicable specifications;
- Name and address of the applicant;
- Name, type, reference, serial number or any other data for precisely identifying the equipment;
- Date of issuing the notice;
- Notice validity expiry date.

The notice is drafted in French and, upon request, in English.

### **7.2 Validity duration of the ACSE**

The validity duration of the ACSE is limited to three years beginning on the issuing date.

### **7.3 Marking**

Each equipment item covered by an ACSE shall be marked legibly, permanently and indelibly, the marking having to be accessible so as to facilitate the verification during on-site inspections.

The marking and/or labelling shall indicate, as a minimum:

- Equipment manufacturer's name or symbol
- "ACSE" pictogram (see Appendix no. 7)

and may be completed on the manufacturer's initiative by:

- Family and type of incorporated protection (upon the manufacturer's initiative)
- Fluid category (upon the manufacturer's initiative).

In case of marking on a label, the latter shall withstand the conditions related to the use and to the environment of the equipment.

### **7.4 Publication**

The list of equipment subject to an ACSE issued by CSTB is periodically updated and published on the CSTB website.

In addition, in an endeavour to provide the best information possible to users, CSTB reserves the right to publish the full content of the ACSEs.

## 7.5 On-site inspection

In the event of a customer complaint or of a critical disparity observed during an inspection audit, CSTB reserves the right to carry out at any moment the quality assurance operations that it judges necessary within the distribution systems, at the sale or display points of the equipment or where the equipment is used.

In case non-conformity is detected, CSTB will inform the holder of the disparities.

The holder is to indicate, by return mail, the corrective measures taken to bring the equipment back into conformity as well as the steps taken to recall or correct non-conforming products.

CSTB reserves the right to withdraw the equipment from the list of ACSEs in the following cases:

- No reply to the discrepancy;
- Reply to the discrepancy not pertinent (content and time frame);
- Corrective action not implemented.

## 8 Responsibilities and obligations

The issue of an ACSE by CSTB does not release the applicant/holder of the ACSE from the responsibilities incumbent upon it by virtue of the laws and regulations in force. In particular, the responsibility for the proper operation of the equipment and its performance is incumbent upon the applicant/holder of the ACSE.

The applicant/holder certifies having the professional skills required to analyse and use the ACSE issued by CSTB. The use it makes of the ACSE will come under its sole responsibility.

CSTB is only responsible for damages that are a direct consequence of a blatant breach of its obligations. It may only be held responsible for direct damages incurred by the applicant/holder, all damages combined, in the maximum limit of the price owed by the applicant/holder for the ACSE issue service.

CSTB reserves the right to refuse to issue an ACSE if it considers that the substantiation provided by the applicant does not meet the criteria required to issue the ACSE (see article 7).

The type of ACSE issue service assumes an exchange of information between CSTB and the applicant. The latter therefore undertakes, with respect to CSTB, to a general obligation of diligence, particularly in terms of supplying, in due time, aspects and information required by CSTB and necessary to issue the ACSE.

## 9 Confidentiality

CSTB undertakes not to communicate information to third parties, of a technical or commercial nature, coming from the applicant and provided to CSTB during the ACSE issue procedure.

CSTB undertakes to have this confidentiality obligation adhered to by its personnel.

## 10 The rates

### 10.1 Services

The expenses related to ACSE review and renewal are covered by a rates scale, updated annually and distributed by CSTB upon request. These fees are broken down as follows:

- Administrative expenses;
- Examination expenses (evaluation procedure);
- Cost of additional tests (will be subject to a specific quote) as laid down in Chapter 3.4;
- Cost of inspection audits;
- Cost of on-site inspection;
- Costs of publication, distribution and notification.



## 10.2 Collection for services

The expenses relative to examination services are payable in a single payment at the moment of submission of the dossier.

The expenses relative to renewal are payable in a single payment at the moment of renewal application.

The applicant/holder is free to refuse any quote relating to additional tests considered useful by CSTB and consequently to relinquish its ACSE application. In this case, it shall notify CSTB by registered letter within 15 days of date on which this quote was sent by CSTB and remains liable for the expenses relating to the review/renewal mentioned in 7.1.

## 11 List of appendices

The following appendices are an integral part of the Rules for Granting the ACSE:

Appendix 1: ACSE standard initial examination application form

Appendix 2: ACSE standard renewal application form

Appendix 3: ACSE standard maintenance application form

Appendix 4: Standard sworn statement letter

Appendix 5: Standard equipment analysis procedure

Appendix 6: Standard protection device analysis procedure

Appendix 7: ACSE logo graphic guidelines

# ACSE standard application form

## Initial examination

CSTB  
Hydraulique et Equipements Sanitaires  
Robinetterie et Appareils Sanitaires  
For the attention of Mr Jean-Marie FRANCO  
84 avenue Jean Jaurès - CHAMPS-SUR-MARNE  
77447 MARNE-LA-VALLÉE CEDEX 02 (France)

Conc.: **Equipment Sanitary Conformity Notice Application**

Enclosed document(s): a technical dossier [technical documentation, design diagrams (part concerning the protection device), hydraulic diagrams, existing certificates, etc.]

### 1. Applicant's identification

Company name: \_\_\_\_\_

Address: \_\_\_\_\_

Postcode: \_\_\_\_\_ Town: \_\_\_\_\_ Country: \_\_\_\_\_

Telephone: \_\_\_\_\_ Fax: \_\_\_\_\_

SIRET No.<sup>1</sup>: \_\_\_\_\_ NAF Code<sup>1</sup>: \_\_\_\_\_

VAT identification number<sup>2</sup>: \_\_\_\_\_

Electronic address: \_\_\_\_\_

Web site: \_\_\_\_\_

Quality system certified<sup>3</sup>:  ISO 9001

Legal representative<sup>4</sup>: Surname, First name: \_\_\_\_\_

Position: \_\_\_\_\_

Correspondent (if different): Surname, First name: \_\_\_\_\_

Position: \_\_\_\_\_

Invoicing address (if different): \_\_\_\_\_

### 2. Description of the application (one sheet for each fixture)

Fixture type: \_\_\_\_\_

Use: \_\_\_\_\_

Trademark: \_\_\_\_\_

Model, references (one for each fixture): \_\_\_\_\_

Specific characteristics: \_\_\_\_\_

I, the undersigned \_\_\_\_\_, representative of company \_\_\_\_\_, hereby declare that I am requesting CSTB to carry out a technical examination of the above-mentioned fixture for evaluation and verification required to obtain an ACSE.

For that purpose, I declare that I know and accept the Rules of granting an ACSE and commit myself to respect them during the whole validity period of such ACSE, and that I am informed of the price rate applicable to the processing of this application and to the possible granting of an ACSE.

I commit myself to provide CSTB with all the information needed to facilitate the processing of the dossier.

**Date and signature of the applicant's legal representative**

<sup>1</sup> Only for French companies.

<sup>2</sup> Concerns European manufacturers.

<sup>3</sup> Enclose the copy of the certificate.

<sup>4</sup> The legal representative is the legally responsible person.

APPENDIX 2

# ACSE standard application form

## Renewal

CSTB  
Hydraulique et Equipements Sanitaires  
Robinetterie et Appareils Sanitaires  
For te attention of Mr Jean-Marie FRANCO  
84 avenue Jean Jaurès - CHAMPS-SUR-MARNE  
77447 MARNE-LA-VALLEE CEDEX 02 (France)

Conc.: **Equipment Sanitary Conformity Notice Renewal Application**

### 1 Applicant's identification

---

Company name: \_\_\_\_\_

Address: \_\_\_\_\_

Postcode: \_\_\_\_\_ Town: \_\_\_\_\_ Country: \_\_\_\_\_

Telephone: \_\_\_\_\_ Fax: \_\_\_\_\_

Electronic address: \_\_\_\_\_

Quality system certified <sup>1</sup>:  ISO 9001

Legal representative <sup>2</sup>: Surname, First name: \_\_\_\_\_

Position: \_\_\_\_\_

Correspondent (if different): Surname, First name: \_\_\_\_\_

Position: \_\_\_\_\_

Invoicing address (if different): \_\_\_\_\_

Modifications made to the equipment covered by the ACSE:

- If so: Supply the new technical file (technical documentation, design diagrams (part concerning the protection device), hydraulic diagrams, existing certificates, etc.).
- If not: Make a declaration as specified in Appendix 4.

### 2 Description of the renewed ACSE

---

ACSE number: \_\_\_\_\_

Date of validity: \_\_\_\_\_

Equipment concerned: \_\_\_\_\_

I, the undersigned \_\_\_\_\_, representative of company \_\_\_\_\_, hereby declare that I am requesting CSTB to renew the above-mentioned ACSE.

For that purpose, I declare that I know and accept the Rules of granting an ACSE and commit myself to respect them during the whole validity period of such ACSE, and that I am informed of the price rate applicable to the processing of this application and to the possible renewal of an ACSE.

I commit myself to provide CSTB with all the information needed to facilitate the processing of the dossier.

**Date and signature of the applicant's legal representative**

---

<sup>1</sup> Enclose the copy of the certificate.

<sup>2</sup> The legal representative is the legally responsible person.

APPENDIX 3

# ACSE standard application form

## ACSE maintenance for another trademark

CSTB  
Hydraulique et Equipements Sanitaires  
Robinetterie et Appareils Sanitaires  
For the attention of Mr Jean-Marie FRANCO  
84 avenue Jean Jaurès - CHAMPS-SUR-MARNE  
77447 MARNE-LA-VALLEE CEDEX 02 (France)

Conc.: **Equipment Sanitary Conformity Notice Maintenance Application**

### 1 Identification of the manufacturer of the original equipment

Name of the manufacturer holder of the ACSE: \_\_\_\_\_  
Legal representative<sup>1</sup>: Surname \_\_\_\_\_ , First name: \_\_\_\_\_  
Position: \_\_\_\_\_

### 2 Identification of the distributor

Company name: \_\_\_\_\_  
Address: \_\_\_\_\_  
Postcode: \_\_\_\_\_ Town: \_\_\_\_\_ Country: \_\_\_\_\_  
Telephone: \_\_\_\_\_ Fax: \_\_\_\_\_  
SIRET No.<sup>2</sup>: \_\_\_\_\_ NAF Code<sup>5</sup>: \_\_\_\_\_  
VAT identification number<sup>3</sup>: \_\_\_\_\_  
Electronic address: \_\_\_\_\_  
Quality system certified<sup>4</sup>:  ISO 9001  
Legal representative<sup>1</sup>: Surname, First name: \_\_\_\_\_  
Position: \_\_\_\_\_  
Correspondent (if different): Surname, First name: \_\_\_\_\_  
Position: \_\_\_\_\_  
Invoicing address (if different): \_\_\_\_\_

ACSE No.	Date of validity	Designation of the equipment	Reference of the manufacturer's equipment	Reference of the distributor's equipment

<sup>1</sup> The legal representative is the legally responsible person.

<sup>2</sup> Only for French companies.

<sup>3</sup> Concerns European manufacturers.

<sup>4</sup> Enclose the copy of the certificate.

APPENDIX 3

**Equipment manufacturer's commitment:**

I, the undersigned \_\_\_\_\_, representative of company \_\_\_\_\_, apply for the maintenance of the autorisation to affix the ACSE on the equipment items that only differ from those previously described by their references and the trademark which are affixed thereon and by slight changes which in no way modify their operating characteristics.

The company that is going to distribute the equipment under its trademark is identified below.

I commit myself to immediately inform CSTB of any modification made to the distribution of these products and, in particular, any halt in the supply to the company mentioned below.

I authorise CSTB to inform the distribution company of the penalties applied to the equipment I manufacture.

Sincerely yours,

**Date and signature of the manufacturer's legal representative**

**Distributor's commitment**

I, the undersigned \_\_\_\_\_, representative of company \_\_\_\_\_, commit myself:

- to make to technical modification to the above-mentioned equipment;
- to make modifications of detail only;
- not to modify the trade names mentioned above except in agreement with the manufacturer who holds the ACSE;
- to distribute under these trade names only the products delivered by the manufacturer;
- not to make any modification to the said trade names without having first of all notified CSTB by registered letter with acknowledgement of receipt;
- not to make any modification to the marking of the products affixed by the manufacturer, in conformity with the ACSE provisions, which the undersigned declares he is familiar with;
- to provide CSTB with my assistance for any verification relating to the products covered by this application and to their sales;
- to apply measures which result from penalties decided in conformity with the Rules for granting the ACSE;
- to pay the amount of the costs set down in the ACSE price list and to make all later payments that will be requested of me in conformity with those granting rules.

Sincerely yours,

**Date and signature of the distributor's legal representative**

**STANDARD LETTER**  
**SWORN STATEMENT**

**Conc.: Equipment Sanitary Conformity Notice**

**Sworn statement of absence of modification to the equipment referred to in the application for ACSE renewal**

I, the undersigned,

.....

acting in my capacity as: .....

whose headquarters are located at:

.....

.....

.....

solemnly declare that no modification was made to the equipment listed on ACSE no..... and referred to in the renewal application of dd/mm/yyyy.

List of the equipment items referred to in the renewal application:

Ref. no. of the initial ACSE	Date of validity	Designation of the equipment	Reference of the manufacturer's equipment

For the appropriate legal purposes

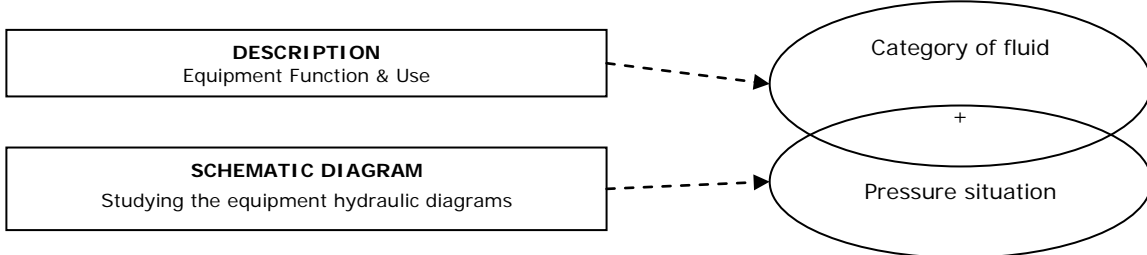
Done at ..... on dd/mm/yyyy

**Signature of the applicant's legal representative:**

APPENDIX 5

**Equipment Analysis**

**1.1/ Evaluating the risk of pollution**



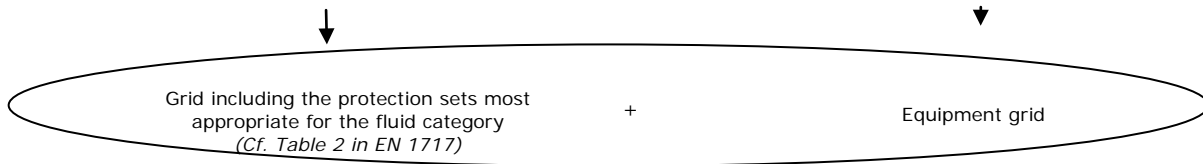
**1.2/ Determining the protection device(s) most appropriate for the risk of pollution considered (extract of table 2 in EN 1717)**

Protection unit	Category of fluids				
	1	2	3	4	5
AA Unrestricted air gap	*	*	*	*	*
AB Air gap with overflow non-circular (unrestricted)	*	*	*	*	*
AC Air gap with submerged feed incorporating air inlet plus overflow	*	*	*	-	-
AD Air gap with injector	*	*	*	*	*
AF Air gap with overflow circular (restricted)	*	*	*	*	-
AG Air gap with overflow tested by vacuum measurement	*	*	*	-	-
BA Backflow preventer with controllable reduced pressure zone	*	*	*	*	-
CA Backflow preventer with different non controllable pressure zones	*	*	*	-	-
DA In line anti-vacuum valve	o	o	o	-	-
DB Pipe interrupter with atmospheric vent and moving element	o	o	o	o	-
DC Pipe interrupter with permanent atmospheric vent	o	o	o	o	o
EA Controllable antipollution check-valve	*	*	-	-	-
EB Non controllable antipollution check-valve	Only for certain domestic uses				
EC Controllable antipollution double check-valve	*	*	-	-	-
ED Non controllable antipollution double check-valve	Only for certain domestic uses				
HA Hose union backflow preventer	*	*	o	-	-
HB Shower hose union anti-vacuum valve	o	o	-	-	-
HD Hose union anti-vacuum valve combined with a check-valve	*	*	o	-	-

General remarks:  
Units with an atmospheric vent may not be installed where it is liable to flooding (for examples AA, BA, CA, ...).

- Covers the risk
- Covers the risk only if p = atm
- does not cover the risk
- \* is not applicable

Fluid category					
Pressure	1	2	3	4	5
P=atm					
P>atm					



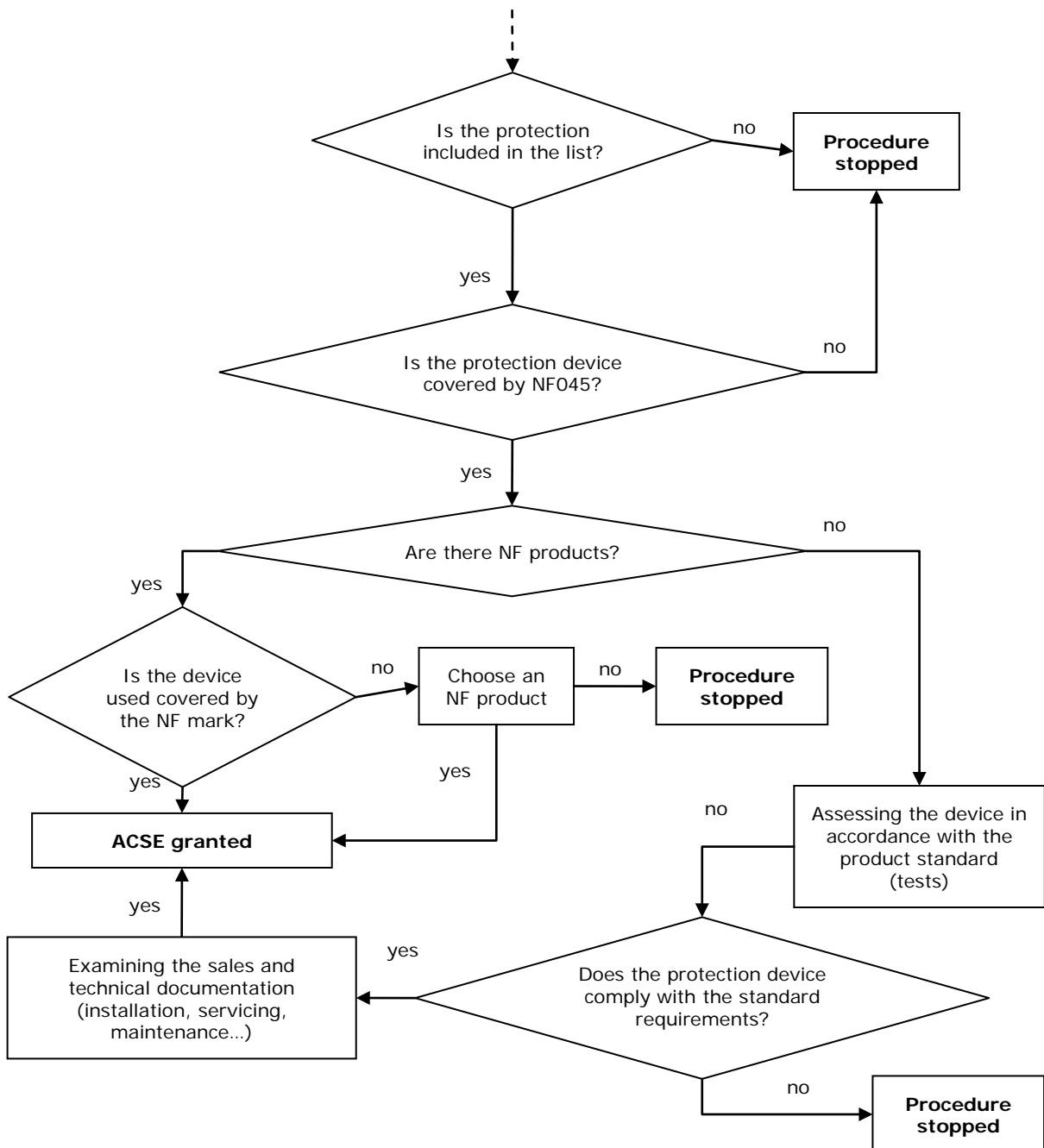
**Obtaining a list of protection devices accepted in accordance with EN 1717 (example)**

Pressure	Protection – Fluid category				
	1	2	3	4	5
P=atm	AA-AB-AD-AC				AA-AB-AD-DC
P>atm					

**Analysing the equipment protection device**

Obtaining a list of protection devices accepted in accordance with EN 1717 (example)

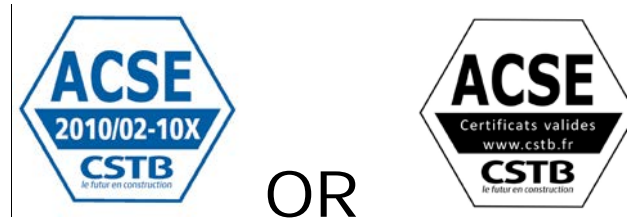
	Protection – Fluid category				
Pressure	1	2	3	4	5
P=atm	AA-AB-AD-AC				AA-AB-AD-DC
P>atm					





## ACSE logo graphic guidelines

The Equipment Sanitary Conformity Notice is represented by the following pictogram:



- The ACSE pictogram must be readable at all times and accessible to facilitate checking during on-site inspections;
- The ACSE pictogram must be printed **in black**;
- The minimum width of the logo is 25 mm provided readability is good according to the printing technique;
- The ACSE pictogram may be associated with another brand or marking.

The ACSE number is obtained as follows:

2010/02-XXX : Year of the initial examination for the equipment and the associated protection device/month of this initial examination-number\*.

\*: This number will be kept for all the future renewals to be conducted following the initial examination incremented of the year of renewal.