



CERTIFICATION

QB Certification Reference System: Flexible underlays for waterproofing for walls



Identification number: QB38
Revision No.: 04
Effective Date: 15/04/2024

QB 38 Certification Reference System
Flexible Underlays for Waterproofing for Walls
Revision No.: 04



This document has been drawn up under the initiative and direction of CSTB, which has gathered the opinions of all interested parties. Any reproduction or representation of this document, in whole or in part, and any use of all or part of this document for the purpose of assessments, certification or tests performed without CSTB's prior written consent, are prohibited.



TABLE OF CONTENTS

Part 1	The application	6
1.1	Scope	6
1.2	Added value of certification	7
1.3	Applying for the certification.....	9
Part 2	The Certification Program	10
2.1	Regulations.....	10
2.2	Additional standards and specifications.....	11
2.3	Declaration of Changes	11
2.4	Quality management provisions: audit framework.....	13
2.5	Marking – General Provisions.....	20
2.6	Conditions for stopping marking or de-marking in the event of suspension or withdrawal	23
Part 3	Certification Process	24
3.1	General.....	24
3.2	Certification program.....	25
3.3	Audits	26
3.4	Sampling.....	27
3.5	Tests	28
3.6	Technical Assistance Evaluation	29
Part 4	Stakeholders	31
4.1	The Certifying body.....	31
4.2	Auditing Bodies	31
4.3	Test Organizations.....	32
4.4	Subcontracting	32
4.5	Special Committee.....	32
Part 5	Lexicon	34

[QB Certification Administrative Management Annex](#)

[QB Certification Technical Management Annex](#)

QB 38 Certification Reference System
Flexible Underlays for Waterproofing for Walls
Revision No.: 04



This certification reference system was approved by the CSTB's Technical Department on 03/04/2024.

The CSTB, as a certification body accredited by COFRAC under the number 5-0010 (scope of accreditation available on www.cofrac.fr), undertakes to draft certification reference systems that meet appropriate requirements with regard to the quality of the products, their suitability for use and their durability.

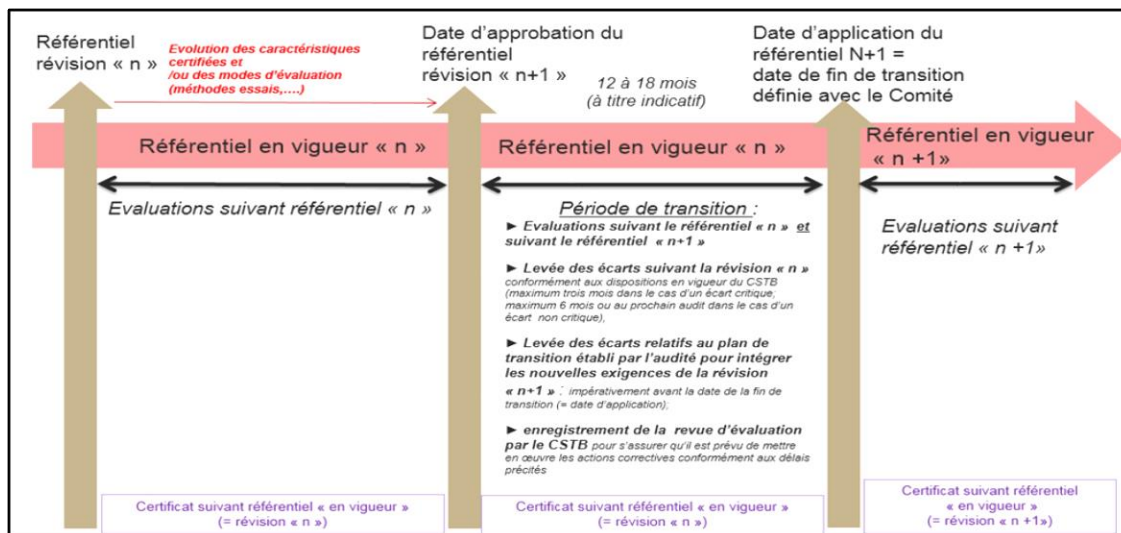
This certification reference system may therefore be revised, in whole or in part, by CSTB, after the interested parties have been consulted.

MODIFICATION HISTORY

Modified Part	Revision No.	Effective Date	Modification made
The whole document	00	17/11/2017	Creation of the Certification Framework.
§1.2 §2.6.2	01	09/10/2018	Updating the marking procedures. Transfer of the description of the E.J. classification to Technical Annex 38-01.
The whole document	02	05/02/2021	Update of the reference system structure. Reduction of the minimum number of stakeholders. Update of the Technical Document DT99038-01 rev01. Added C classification.
§1.1 §2.2 The whole document	03	15/03/2023	Update of the scope to consider protective membranes subject to an ATec, DTA or ATEX assessment.
§3.4	04	15/04/2024	Possibility of taking samples remotely at the beginning of the year.
§2.5			Details on how to mark them.
The whole document			Update of the reference system in relation to the update of the technical document DT 99038-01 and the technical annex. Concatenation of the administrative annex and the technical annex to the QB38 standard.
Technical Annex			Description of the E.J.C. classification. Change of presentation of certified characteristics, technical specifications and test list.

MANAGING REPOSITORY TRANSITIONS

When a revision of the reference framework may impact the performance of the product (evolution of certified characteristics and/or evaluation methods), transition management must be put in place. It is carried out according to the following scheme:



Part 1

The application

1.1 Scope

This Certification Standard concerns Flexible underlays for waterproofing for walls:

- **Rain barrier membranes:** Membranes that comply with the NF EN 13859-2 product standard and are installed in accordance with NF DTU 31.2 and NF DTU 41.2.
- **Water protection membranes for facades on wooden supports:** Membranes that comply with the NF EN 13859-2 product standard but whose implementation is different from the requirements of the NF DTU (NF DTU 31.2 and NF DTU 41.2). This family of Technical Approvals is aimed at the implementation of timber constructions. These membranes and their implementation are evaluated by specific technical evaluations such as Technical Approvals or ATEEx.
- **Water protection membranes for facades on concrete and masonry supports:** Membranes that comply with the NF EN 13859-2 product standard but whose implementation is different from the requirements of the NF DTU (NF DTU 31.2 and NF DTU 41.2). This family of Technical Approvals is intended for use on concrete and/or masonry substrates. These membranes and their implementation are evaluated by specific technical evaluations such as Technical Approvals or ATEEx.

This standard also applies to kits consisting of a flexible membrane for walls and the integrated adhesives and/or applied adhesive tapes supplied with the membrane.

The QB brand is committed to controlling:

- the safety features of people, pets and property, when required in consideration of the normal and routine use of the products,
- and/or fitness for use,
- and/or product sustainability,
- and/or any additional features that may differentiate itself in the market.

Certified flexible wall membranes benefit from a proven positive evaluation of suitability for use, with reference to the specifications of the NF DTU, a Technical Approval or Technical Application Document (§ Scope) or a Technical Experimental Assessment (ATEEx) or any collegial technical evaluation of a construction process integrating flexible façade wall membranes, proven to be positive and compatible with other processes to which this process is combined for the construction of a work.

Note: a construction process includes the entire chain, design and construction, which leads to the transformation of a product or the use of a service for the realization of a part of a work.



1.2 Added value of certification

Certification is a third-party recognition of the conformity of characteristics demonstrating the added value of the product.

The [certified characteristics](#) of the application « Flexible underlays for waterproofing for walls» are as follows:

- i. According to the NF DTU 31.2 standard (expected performance of the product in accordance with the standard):
 - Resistance to water penetration: class W1 in initial and aged state;
 - The water vapour transmission property: Sd value ≤ 0.18 m;
 - Dimensional stability: between -1.5% and +1.5%;
 - Flexibility at low temperatures: no cracking at temperatures below or equal to -5°C.
- ii. With a more demanding level of performance than the NF DTU 31.2 standard:
 - Composition;
 - The Technical Assistance Service:
 - The CSTB will verify that these documents comply with the rules for the implementation of the products covered by the certification, for timber frame constructions that comply with the NF DTU 31.2 and NF DTU 31.4 standards and for wood cladding that complies with the DTU 41.2 standard.
 - A multiple-choice question will be used to evaluate the technical support service. If the answers provided are not satisfactory (score below 7/12), an action plan will be required. This plan must demonstrate the training of the technical assistance referent in the technical and regulatory context. A second assessment will be carried out within 2 months via a new MCQ with the possible planning of a site visit.
 - The E.J.C. classification.
 - The resistance of the junctions to peeling and shearing.

Refer to the tables in [the Technical Appendix](#), “Part 1 Definition of E.J.C. Classification”, and “Part 2, Detailed Certified Characteristics”.

The QB trademark is the exclusive property of the CSTB, whose head office is located at 84 avenue Jean-Jaurès, 77 420 CHAMPS-SUR-MARNE, by virtue of the registration as a collective trademark made in its name at the INPI.

The E.J.C. classification, associated with the QB mark, defined in this document is the property of the CSTB.

QB 38 Certification Reference System
Flexible Underlays for Waterproofing for Walls
Revision No.: 04



These certified characteristics are evaluated under the responsibility of the CSTB, with the following means of control:

	Admission	Monitoring
Conducting a production audit by a qualified technical auditor: <ul style="list-style-type: none"> - Verification of the performance of controls and records of production: raw materials, manufacturing, finished products, - Verification of quality control arrangements: metrology, packaging, storage, traceability, product marking, handling of non-conformities and customer complaints. - Supervision of testing of certified characteristics performed by the applicant, if applicable. 	Yes	Yes Frequency: 1 audit every year (*)
Testing by a laboratory recognized by the certifying body (independent and competent): <ul style="list-style-type: none"> - Remote sampling of samples carried out by the certifying body and/or carried out at the applicant's/holder's site. 	Yes	Yes Frequency: 1 annual test campaign (**)
Conducting an evaluation of the company's technical assistance: <ul style="list-style-type: none"> - Evaluation of technical assistance through answers to a multiple-choice question 	Yes	Yes Frequency: Every time there is a change of person within the company,

- (*) The frequency may be reduced to 1 audit every 3 years, provided that:
- the holder is ISO 9001 certified by a certifying body accredited by a member of the E. A (European cooperation for Accreditation) or by a member of the I.A.F. (International Accreditation Forum);
 - The results of previous evaluations are very satisfactory (audit without deviations).

The audit frequency can be increased to 1 annual audit when critical non-conformities are found.

- (**) In the case of reduced monitoring, in years for which an audit is not planned, the incumbent shall report annually:
- At the brand's laboratory, products chosen by the manager on the basis of production dates;
 - To the manager, self-controls of production.



1.3 Applying for the certification

Any legal entity:

- manufacturing products falling within the scope defined above and capable of complying with the technical requirements described in Part 2 of this document,
- distributing products falling within the scope defined above, for which the manufacturer complies with the technical requirements described in Part 2 of this document,

can apply for a right to use the QB trademark "Flexible underlays for waterproofing for walls".

Such a request is referred to as a "request", and the entity making it is referred to as the "requester".

Before applying, the applicant must ensure that it meets the conditions set out in this certification standard, concerning its product and the sites concerned. It is the responsibility of the applicant to ensure that the regulations applicable to their product are complied with.

He must agree to comply with the same conditions throughout the period of use of the QB trademark.

Note: Cases of subcontracting of production by an applicant

The applicant may subcontract part of the production of its products subject to this certification standard.

In this case, he/she undertakes to be:

- responsible for the effectiveness of the production control system as a whole in compliance with this certification standard;
- able to produce, on the one hand, the specifications defining the controls that it imposes on its subcontractor to meet the requirements of this certification standard and, on the other hand, the evidence of the subcontractor's control to meet these same requirements.

Failure to comply with all of these commitments may result in the application being interrupted or suspended.



Part 2

The Certification Program

The certification program for the "Flexible underlays for waterproofing for walls" application is composed of this certification standard, which references:

- the General Requirements of the QB brand, which set out the organization and conditions of use of the trademark;
- additional standards and specifications;

This certification standard is part of the certification of products and services other than food provided for in the Consumer Code (Articles R-433-1 to R 433-2 and L 433-3 to L 433-11). It specifies the conditions for the application of the General Requirements of the QB mark to the products defined in Part 1.

2.1 Regulations

The attribution of the right to use the QB trademark cannot in any way substitute the responsibility of the CSTB for that which legally falls on the company holding the right to use the QB trademark.

For the regulatory requirements covered by the certification standard, the applicant/holder must submit to the certifying body during the certification audits the documentary proof defined by the regulations attesting to the compliance of its product with the regulatory requirements.

Documentary evidence must be communicated to the CSTB as part of the examination of the admission/extension file.

If the product is altered, the documentary evidence shall be presented to the auditor as part of the surveillance audit, by any suitable means.

The applicant/holder shall be liable to the certifying body for any documentary evidence that is inaccurate, misleading and/or does not comply with the definition of documentary evidence contained in the regulations.

The certifying body's mission is not to demonstrate the product's compliance with the regulatory requirements listed in this document: this mission is exclusively the responsibility of the bodies approved by the competent authorities for the application of each of the regulations concerned.

The main regulations applicable to placing on the French market and for which the applicant/holder must present to the certifying body a document attesting to the compliance of his product with the regulations are listed below.



Regulation	Documentary Evidence Required
<p>Regulation (EU) No 305/2011 of the European Parliament and of the Council of 9 March 2011.</p> <p>Products covered by the EN standard 13859-2 in force circulating in the European Economic Area are subject to CE marking in accordance with Regulation (EU) 305/2011 of the European Parliament and of the Council of 9 March 2011 laying down harmonised conditions for the marketing of construction products and repealing Council Directive 89/106/EEC.</p>	<p>Declaration of Performance</p>
<p>Decree No. 2011-321 of 23 March 2011 on the labelling of construction and decoration products on their emissions of volatile pollutants.</p>	<p>Product Labeling</p>

2.2 Additional standards and specifications

For references mentioning a date of application or an index, only the cited edition applies. For references that do not mention a date of application or index, the latest edition of the registration document applies (including any amendments).

2.2.1 APPLICABLE STANDARDS

See [Technical Appendix](#).

2.2.2 ADDITIONAL TECHNICAL SPECIFICATIONS

In addition to the requirements set out in the previous paragraphs, the products must meet the additional specifications defined:

- Technical Document **99038-01**: Test Procedures.

2.3 Declaration of Changes

This paragraph specifies the information that the holder of the right to use the QB trademark must provide to the CSTB and the steps that must be taken in the event of changes concerning:

- the holder;
- the manufacturing unit;
- the quality organization of the manufacturing unit;
- the product.

Failure to comply with this obligation, as noted by the CSTB, may lead to a suspension or even withdrawal of the right to use the QB trademark.

In cases not previously provided for, the CSTB determines whether the changes call into question the certification and whether an additional check is required.

Depending on the results of the investigation, the CSTB notifies the appropriate decision.

2.3.1 CHANGES ABOUT THE CERTIFICATION HOLDER

The certification holder must notify the CSTB in writing of any legal change in its company or any change of company name.



In the event of a merger, liquidation or absorption of the owner, all rights of use of the QB trademark that he may benefit from cease by operation of law.

A new application may be filed, and its processing may be simplified depending on the type of change made.

2.3.2 CHANGES ABOUT THE MANUFACTURING UNIT

- In the case of a transfer of production:

Any transfer (in whole or in part) of the manufacturing unit of a certified product to another place of manufacture shall result in the immediate cessation of the QB marking by the holder on the products concerned.

The licensee must declare this transfer in writing to the CSTB, which will organize an audit of the new manufacturing unit and, if necessary, carry out tests.

The visit can be reduced, or even eliminated, when the new manufacturing unit is already known to the CSTB.

The procedures for evaluating and deciding on the renewal of the certification are identical to those for admission, described in part 3 of this certification framework.

- In the event of a change in the production process:

The holder must demonstrate that the modification of the production process does not impact the performance of the certified characteristics of the product (see § 2.4.2.: § 8.5.6. 9001 V15); he informs the CSTB

2.3.3 CHANGES ABOUT THE QUALITY ORGANIZATION OF THE MANUFACTURING UNIT

The holder must notify the CSTB in writing of any changes relating to its quality organization that may affect the compliance of production with the requirements of this certification standard.

It must declare any changes to the certification of its quality management system. Where applicable, if the distribution is carried out by a third party, the licensee must undertake to inform the CSTB immediately of any change made in the distribution of its products and in particular any cessation of supply by the designated third party.

Any temporary cessation of internal control of a certified product entails an immediate cessation of the QB marking of the product by the holder, who must inform the CSTB.

The CSTB then notifies the holder of a decision to suspend the right to use the QB trademark for a fixed period, at the end of which, if the right of use cannot be reinstated, it will be subject to a withdrawal of the right to use the QB trademark.

Special case of a major modification of the factory production control system:

The request will be treated as an extension request.

Additional tests will have to be carried out by the CSTB, the brand's laboratory.

2.3.4 CHANGES ABOUT THE CERTIFIED PRODUCT

Any modification of the certified product in relation to the application file, which may affect the compliance of the product with the requirements of this certification standard, must be the subject of a written declaration to the CSTB.



Depending on the change declared, the CSTB determines whether it is a request for an extension of certification.

2.3.5 TEMPORARY OR PERMANENT HALT OF PRODUCTION

Any permanent or temporary halt of certified product production (or a range of products) or any discontinuation of the right of use the QB mark must be declared in writing to the CSTB, specifying the period necessary to dispose of the stock of QB-marked products. The suspension or withdrawal of the right of use the QB trademark shall be notified to the owner of the QB trademark by the CSTB. At the end of the period indicated by the holder, the product is removed from the list of certified products.

Any temporary halt of certified product production (or a range of products) must be subject to a suspension of the right of use the QB trademark for a maximum period of 6 months, renewable only once, if applicable. The total duration of the suspension of the right to use the QB trademark for these products must not exceed one year. The suspension can only be lifted after a verification audit.

2.3.6 CHANGES IN DISCTRIBUTION CHANNELS

The holder must inform the CSTB of any change made in the distribution of certified products as soon as it becomes known to the holder and when it ceases to supply a distributor who retains the right to use the QB mark, which consequently ceases to maintain the right to use the QB mark.

The distributor, holder of a right of use the QB mark, must undertake to inform the CSTB of any change in its supplies that effectively puts an end to this right of use of the QB mark. The right to use the QB mark by the distributor can only be validated after further examination in accordance with part 3 of this certification standard.

2.3.7 CHANGED REGARDING AN AMENDMENT OF APPLICABLE STANDARDS AND SPECIFICATIONS

In the case of the withdrawal of a standard for safety reasons, the CSTB notifies the withdrawal of the right to use the QB mark, requiring the manufacturer to immediately stop the QB marking of its manufacture and the withdrawal of its QB-marked products from the distribution channels.

2.4 Quality management provisions: audit framework

2.4.1 OBJECT

The applicants/proprietors and their distributors holding a right of use are each responsible for satisfying all the requirements of the certification allowing the attribution of the right to use the QB mark relating to the product in question.

The applicant/holder must implement all necessary means to ensure that the product always complies with this certification standard. In addition, it must ensure the control of external service providers by any means of evaluation of all the constituent elements of the product or outsourced service(s) for which it is the applicant or holder of the right to use the certification mark.

This paragraph lays down the minimum quality management requirements that the applicant/holder must put in place to ensure that products that are continuously manufactured in compliance with this certification standard.

The quality system is based in part on the implementation by the applicant/holder of a set of organizational arrangements to monitor compliance with additional standards and



specifications, where applicable, of the products delivered. These arrangements are described in paragraph 2.4.2 below.

2.4.2 MINIMUM REQUIREMENTS FOR QUALITY MANAGEMENT

The applicant/holder must have implemented its own means, the existence and effectiveness of which are assessed on the basis of the requirements of the NF EN ISO 9001 revision 2015 standard.

If the manufacturing unit is not NF EN ISO 9001 certified, the applicant/holder must provide proof of the effective implementation of a set of organizational provisions and a production control system to monitor compliance with the additional standards and specifications of the products delivered that meet at least the requirements of this certification standard.

Audits are conducted in accordance with Table 1 below. This table indicates the specific requirements of the NF EN ISO 9001 standard that must be verified as part of the certification.

As part of an audit, all of the required requirements identified on the shaded lines in Table 1, below, must be audited. All other quality management requirements must be audited over a period of 3 years.

Possibility of lightening:

If the manufacturing unit has a certified quality management system in accordance with the NF EN ISO 9001 standard, the audits can be "lightened". Only requirements identified on a "shaded" line in Table 1 are audited.

This relief is possible provided that:

- the ISO 9001 certificate includes, within its scope and scope, the sites and activities concerned by the certification mark; and
- the ISO 9001 certificate is issued by a certifying body accredited by COFRAC or by a member of the EA (European Cooperation for Accreditation) or by a member of the IAF (International Accreditation Forum) - see signatories on the COFRAC website www.cofrac.fr, and
- the applicant/holder's latest ISO 9001 audit report is submitted to the CSTB prior to the audit or reviewed during the audit.



Table 1 (Applicable Requirements)

§ ISO 9001: 2015	REQUIREMENTS	MINIMUM EXPECTED EVIDENCE	APPLICABLE (NA = not applicable)
5. Leadership			
5.3.	Roles, responsibilities and authorities within the organization	<p>*Flow chart (Organigramme)</p> <p>* Description of responsibilities and authorities <i>Examples: organizational chart, job descriptions, etc.</i></p> <p>* Designated responsible for ensuring the organization and effective implementation of the production system</p>	<p>■</p> <p>< To be remembered for those in charge of control or having a direct impact on the critical points of the realization of the product></p> <p>All items except: * ISO 9001 V15: §5.3 c,d</p>
7. Support			
7.1.4.	Environment for process implementation	<p>Evidence of maintenance of the work environment. <i>Examples: storage of the product and its components away from the weather, suitable environmental conditions, etc.</i></p>	<p>■</p> <p>< To be remembered for the processes related to the realization of products/services></p>
§ ISO 9001: 2015	REQUIREMENTS	MINIMUM EXPECTED EVIDENCE	APPLICABLE (NA = not applicable)
7.1.5.	Resources for monitoring and measurement	<p>* List of control, measurement and testing equipment used at the product/service site and/or in the laboratory,</p> <p>* Identification of equipment to determine its validity,</p> <p>* Verification or calibration schedule of equipment impacting the validity of the results (in particular the equipment used to carry out tests on certified characteristics),</p> <p>* Evidence of checks and/or calibration <i>Examples: life sheet, verification or calibration report, etc.</i></p> <p>* Proof of connection to national or international standards (where possible),</p> <p>* Validation of software used for monitoring and measuring specified requirements, if applicable.</p>	<p>■</p> <p>< To be remembered for the processes related to the realization of products/services></p>
7.2.	Skills	<p>* Compliance with test methods and control arrangements.</p> <p>* Planned actions to acquire the necessary skills (training, tutoring, etc.), if applicable.</p>	<p>■</p> <p>< To be remembered for those in charge of control or having a direct impact on the critical points of the realization of the product></p>
7.5.	Documented information	* List of internal and external documented information,	<p>■</p> <p>< To be remembered for the processes related to the</p>



§ ISO 9001: 2015	REQUIREMENTS	MINIMUM EXPECTED EVIDENCE	APPLICABLE (NA = not applicable)
		<p><i>Examples: Procedures, operating procedures, test methods, control instructions, quality records, etc.</i></p> <p>* Proof of mastery of internal and external documents, <i>Example: Availability of the applicable version of the test method, reference system, control provisions, etc.</i></p>	<p>realization of products/services></p> <p><i>Note: A Quality Manual is no longer required.</i></p>
§ ISO 9001: 2015	REQUIREMENTS	MINIMUM EXPECTED EVIDENCE	APPLICABLE (NA = not applicable)
8. Carrying out operational activities			
8.4.	Mastery of processes, products and services provided by external service providers	<p>* List of service providers</p> <p>* Contract/order defining the requirements of the applicant/certification holder</p> <p>* Proof of verification of raw materials, components (1), services purchased</p> <p>* Evidence of verification of subcontracting conditions: transport, handling, testing (2), etc.</p>	<p>■</p> <p>< To be taken into account for raw materials, purchased components and for external services that have an impact on the quality of the product/service></p> <p><u>External service providers:</u></p> <p>* supplier of raw materials, components, services integrated into the product/service</p> <p>* subcontractor of external services (e.g. testing, handling, transport, etc.)</p> <p><i>(*) Special case of holders subcontracting part of their production</i></p> <p><i>The CSTB audits subcontractors (provided for in the certification standard)</i></p> <p>All items except: * ISO 9001 v15: § 8.4.1.</p>
8.5.1.	Control of production and service delivery	<p>* Information defining the characteristics of products and services. <i>Examples: product plan / service description.</i></p> <p>* Information defining the activities to be carried out and the results to be achieved. <i>Examples: operating mode(s), work instruction(s), test method(s), certification standard (expected performance)</i></p> <p>* Monitoring and measurement activities <i>Examples: Monitoring plan, control procedures and instruction(s), test methods, etc.</i></p> <p>* Retention of documented information demonstrating compliance of products/services with acceptance criteria <i>(Idem § 8.6.ISO 9001 v15)</i></p>	<p>■</p>

QB 38 Certification Reference System
Flexible Underlays for Waterproofing for Walls
Revision No.: 04



§ ISO 9001: 2015	REQUIREMENTS	MINIMUM EXPECTED EVIDENCE	APPLICABLE (NA = not applicable)
8.5.2.	Identification and traceability	<p>* Identification / Marking of the product in accordance with the requirements of this Certification Standard</p> <p>* Marking of commercial documents in accordance with the requirements of this Certification Standard.</p>	<p>■</p> <p>< To be retained in all cases for identification (and for traceability if relevant)></p>
8.5.4.	Preservation	Verification that the product is preserved throughout the production chain (identification, handling, storage, packaging, transport, etc.)	■
8.5.6.	Control of changes (<i>of production / service</i>)	<p>* Evidence of control over changes in the manufacturing process/service delivery, including the impact of the changes on product performance:</p> <p>- review of changes,</p> <p>- Person authorizing the change and all necessary actions.</p>	■
8.6.	Release of products and services	<p>* Product/service control arrangements; recording of test results and compliance with acceptance criteria (3)</p> <p>*Name of persons who authorized the release of finished products/services</p>	■
8.7.	Control of non-conforming outputs	<p>* Provisions for dealing with non-conformities, including customer complaints, and implementation of these provisions (4)</p> <p>*No derogation allowed on the performance of a certified characteristic</p>	■
10. Improvement			
10.2.	Non-compliance and corrective action	<p>* Implementation of corrective actions to deal with non-conformities on the certified product and customer complaints (5)</p> <p>* Effectiveness of the actions implemented</p>	■

(1) Control over the constituents of the product

The applicant/holder is required to carry out a check on receipt and in any case before use on all the constituents used in the manufacture of its certified products.

The internal 'receipt' control established by the applicant/holder shall include:

- the procedures for checking the products upon receipt to assess their conformity and/or regularity in relation to the expected characteristics,
- including, where appropriate, the rules for sampling the products taken.

This control takes into account any control action exercised by the supplier, e.g. conformity form resulting from a systematic pre-delivery inspection imposed by the applicant/holder on his supplier, supplier certified according to the NF EN ISO 9001 standard for the products concerned or certified supplies, etc.

(2) Testing Outsourcing

The applicant/holder may subcontract the performance of tests to an external laboratory, provided that such subcontracting is the subject of a contract or an order. This subcontracting can only be carried out if the following conditions are met:

- Outsourcing testing does not cause disruption in the manufacturing process (e.g. due to response times);
- the conditions for subcontracting tests are formalized in the contract or order and must define the applicable test method, the frequency of tests, the response times requested, the communication of the results in writing, the procedure in the event of a non-compliant result and the type of equipment used;
- the subcontractor's laboratory where the test is carried out must be accredited according to the NF EN ISO/IEC 17025 standard, or alternatively the test applicant (holder of the Certification Mark) must ensure the conformity of the equipment used (calibrations, test settings, etc.) and the competence of the personnel carrying out the test.

(3) In-process and finished product control

The applicant/holder must have the necessary means for the controls and tests defined by the standards, reference documents and additional specifications referred to in paragraph 2.2 of this standard. The applicant/holder undertakes to carry out a reliable and regular control of its production:

- control of the constituents of the product,
- in-process inspections,
- Verifications, tests carried out on finished products.

In the process of being manufactured

An in-process inspection must be organized by the applicant/holder. It concerns the product in its intermediate states at the main stages of its manufacture and the following of the instructions for setting up production equipment (manufacturing machines, tools).

Control instructions must be formalized and made available to operators. The results of the checks are recorded at each inspection. If the results of the checks indicate that the product does not meet the requirements of this Certification Standard, the necessary corrective actions must be implemented immediately.



On finished products

The applicant/holder is required to check the characteristics of the finished products before delivery and is responsible for organizing this verification. The inspections and tests on finished products carried out by the applicant/holder shall be carried out in accordance with the additional standards and specifications cited in this certification standard.

The measurements of the various characteristics tested are carried out according to the operating procedures defined in the reference standards cited in paragraph 2.2 of this certification standard.

Checks on finished products are carried out by the applicant/holder himself in his production unit.

The applicant/holder will be required to take samples at random at the end of the production line and to carry out checks and tests on these samples. The samples taken must reflect the variety of sizes of the products covered by this certification standard.

The method of taking the samples required for the tests shall be described precisely in the applicant/holder's quality plan and shall not be left to the sole discretion of the operator.

The applicant/holder must record the results of the previous checks. If the results of the normal tests are insufficient, they should be strengthened and the causes of failure should be detected to remedy them by supplementing, if necessary, the manufacturing controls.

(4) Provisions for Dealing with Non-Conformities

They include:

- an analysis to detect the cause of the anomaly,
- an analysis to determine the impact of the anomaly on production since the previous inspection,
- management to ensure that the implementation of corrective actions is effective;
- If, exceptionally, non-compliant products are supplied to a customer, the customer must immediately notify them to take all appropriate measures.

(5) Customer complaints

The register of customer complaints is audited and for this the holder must keep:

- a record of all complaints and appeals relating to the products covered by this certification standard;
- a record of the corrective actions taken when the claims have revealed a manufacturing defect.

The holder shall be able to present to the auditor extracts from these records relating to claims involving the products covered by this certification standard.



2.5 Marking – General Provisions

Marking is an integral part of a product's certification.

In addition to the identification of a certified product and its traceability, the marking of a product with the QB logo, alone or associated with the classification for flexible wall screens, ensures better protection for users and allows holders to defend themselves against misuse and counterfeiting.

Under no circumstances may it refer to the QB mark before obtaining the right to use the said certification mark or presenting counterfeit products for certification.

The reproduction and affixing of the CSTB's logos is only authorized in strict application of the QB graphic charter and in support of the right of use authorized by a valid certificate or with the prior agreement of the CSTB.

In addition, the purpose of mentioning the main certified characteristics is to make transparent to consumers and users the technical characteristics covered by the certification materialized by the QB mark or associated with the E.J.C. classification. In this way, it enhances the value of the certification and its content.

The following marking rules are intended to guide the holder in complying with regulatory requirements and certification requirements. The General Requirements of the QB mark specify the conditions of use, the conditions of validity and the modalities of sanction in the event of misuse of the QB mark alone or in combination with the E.J.C. classification.

Without prejudice to the penalties provided for in the General Requirements of the QB Trademark, any erroneous announcement of the certified characteristics and any fraudulent use of the QB logo expose the holder to prosecution for misleading commercial practices.

2.5.1 THE QB LOGO

The QB logo alone, or associated with a classification, must ensure the identification of any certified product.

The licensee undertakes to comply with the graphic charter of the QB brand. The QB logo and its graphic charter are available from the application manager.

The certified product is designated and identified separately from the non-certified products.

The proprietor shall only use the QB logo alone or in conjunction with the classification for flexible wall screens (see the relevant TD) to distinguish certified products and this without there being any likelihood of confusion with other products and non-certified products.

To avoid confusion between certified and non-certified products, the applicant/holder shall ensure that identical or similar trade names are not used (e.g. "Prod+" for a certified product and "Prod" for a non-certified product).

It is recommended that the holder submit to the CSTB in advance all projects for markings or supports in which the certification mark is mentioned.

If it is not possible to mark the product for technical reasons, it will be necessary to contact the CSTB, which will determine a common marking rule.

2.5.2 MARKING PROCEDURES

This paragraph describes both the procedures for affixing the QB logo, the E.J.C. classification and the marking of certified characteristics.

QB 38 Certification Reference System
Flexible Underlays for Waterproofing for Walls
Revision No.: 04



The requirements of Article R 433-2 of the Consumer Code establish that the marking must comply with the provisions defined in the following paragraphs:

The marking of the E.J.C. classification, associated with the QB mark, must comply with the QB graphic charter (see Page 9 – Other classifications) available: <https://evaluation.cstb.fr/doc/certification/charte-graphique-qb.pdf>.

	Product	Label/packaging/document accompanying the product	Commercial & Technical Support
Owner, Plant and Product Identification			
Holder Identification	<input type="checkbox"/>	<input checked="" type="checkbox"/>	<input checked="" type="checkbox"/>
Factory Identification	<input type="checkbox"/>	<input checked="" type="checkbox"/>	<input checked="" type="checkbox"/>
Trade name or reference	<input checked="" type="checkbox"/>	<input checked="" type="checkbox"/>	<input checked="" type="checkbox"/>
Manufacturing batch number	<input checked="" type="checkbox"/>	<input checked="" type="checkbox"/>	
Certification QB			
Logo QB	<input type="checkbox"/>	<input checked="" type="checkbox"/>	<input checked="" type="checkbox"/>
E.J.C. Classification (horizontal or vertical presentation)	<input type="checkbox"/>	<input checked="" type="checkbox"/>	<input checked="" type="checkbox"/>
Certification Name (in French)	<input type="checkbox"/>	<input checked="" type="checkbox"/>	<input checked="" type="checkbox"/>
Use	<input type="checkbox"/>	<input checked="" type="checkbox"/>	<input checked="" type="checkbox"/>
Certificate Number	<input type="checkbox"/>	<input checked="" type="checkbox"/>	<input checked="" type="checkbox"/>
ATec, DTA or ATEx number	<input type="checkbox"/>	<input checked="" type="checkbox"/>	<input checked="" type="checkbox"/>
Certified Features (in French)	<input type="checkbox"/>	<input type="checkbox"/>	<input checked="" type="checkbox"/>
Link to the CSTB evaluation website	<input type="checkbox"/>	<input checked="" type="checkbox"/> or <input type="checkbox"/> if the QR code is present	<input checked="" type="checkbox"/> or <input type="checkbox"/> if the QR code is present
QR code on the CSTB website	<input type="checkbox"/>	<input checked="" type="checkbox"/> or <input type="checkbox"/> if the link is present	<input checked="" type="checkbox"/> or <input type="checkbox"/> if the link is present
CSTB mailing address			<input checked="" type="checkbox"/>
Greyed out = not affected. <input checked="" type="checkbox"/> = required <input type="checkbox"/> = optional			

The presentation of the E.J.C. classification on the labels must be validated with the manager.

QB 38 Certification Reference System
Flexible Underlays for Waterproofing for Walls
Revision No.: 04



Several examples of label marking for a protective membrane (QB certification part in "Roboto" font):

QB38 - MEMBRANES SOUPLES DE PAROIS

QB38 - MEMBRANES SOUPLES DE PAROIS



ECRANS PARE-PLUIE

OR

MEMBRANE DE PROTECTION A L'EAU

Certificate No.

Certificate No.

Technical Approval No./DTA/ATEX

<https://evaluation.cstb.fr>

<https://evaluation.cstb.fr>



It is recommended to inform the consumer about the main reasons and benefits of using a certified product. The certified characteristics must appear on at least one of the media (product, packaging, or communication media).

The COFRAC accreditation mark may only be reproduced with the prior written authorization of the CSTB and under the following formulation conditions: *"Certification issued by the CSTB benefiting from a COFRAC accreditation Certification of Products and Services, N°5-0010, list of locations and scope available under www.cofrac.fr".*

2.5.2.1 Marking of certified products

All certified products, manufactured from the date indicated on the decision to grant the right to use the QB mark (through the admission or extension procedure) and complying with the requirements of this certification standard, must be marked, at a minimum, with the brand logo (unless technically impossible). See table above.

The marking must appear permanently, legibly and indelibly on the flexible wall screens (direct printing or glued label), with the following indications:

NB: If a coding is established to allow the identification of the product, it must be communicated to the CSTB.

2.5.2.2 Marking on the certified product packaging or on the product accompanying document (if applicable)

All certified product packaging or accompanying documents must incorporate all the marking elements defined in the table above.

If it is not possible to mark the product, the conditions of application on the packaging or on the accompanying documents are defined in the table above.



Note: If the product is already marked, marking on the packaging of certified products should be recommended.

Note: If a coding is established to allow the identification of the product, it must be communicated to the CSTB. Further information may be provided at the initiative of the factory).

2.5.2.3 Marking on communication media and documentation (technical and commercial documents, posters, advertising, websites, etc.)

The generic use of the QB trademark by the reproduction of the trademark in the proprietor's correspondence is prohibited unless the proprietor benefits from the QB trademark for all of its manufactures.

References to the QB mark in communication materials or documentation must be made in such a way that there is no risk of confusion between the certified products and the others. They must incorporate all the marking elements defined in the table above.

For the French market, this information must be given in French (Law No. 94-665 of 4 August 1994 on the use of the French language). If necessary, they can also be given in one or more other languages.

For the proper interpretation of this paragraph, it is recommended that the holder submit in advance to the CSTB any documentation material in which he intends to report on the certification.

2.6 Conditions for stopping marking or de-marking in the event of suspension or withdrawal

When a product is accidentally non-compliant, it and its packaging must not be marked with the QB logo or associated with the E.J.C. classification or it must be crossed out or obscured in such a way that there is no risk of confusion.

In the event of accidental non-compliance after the product has been placed on the market:

→ The manufacturer is responsible for:

- ❖ Notify the CSTB immediately;
- ❖ Validate qualities/batch numbers/deadlines, etc. involved;
- ❖ Provide for retroactive removal of the mark and eventual withdrawal from the market.

→ The CSTB is responsible for:

- ❖ Define the means of controlling the markdown (customer engagement, etc.);
- ❖ Estimate the risks of misuse of the trademark, especially in the case where the certification relates to risky products/services;
- ❖ Depending on these risks, a possible on-site inspection may be triggered (company or business) or information is sent to the public authorities;
- ❖ Commit the holder to carry out corrective actions and/or on-site inspections prior to the decision to withdraw the eventual withdrawal.



Part 3

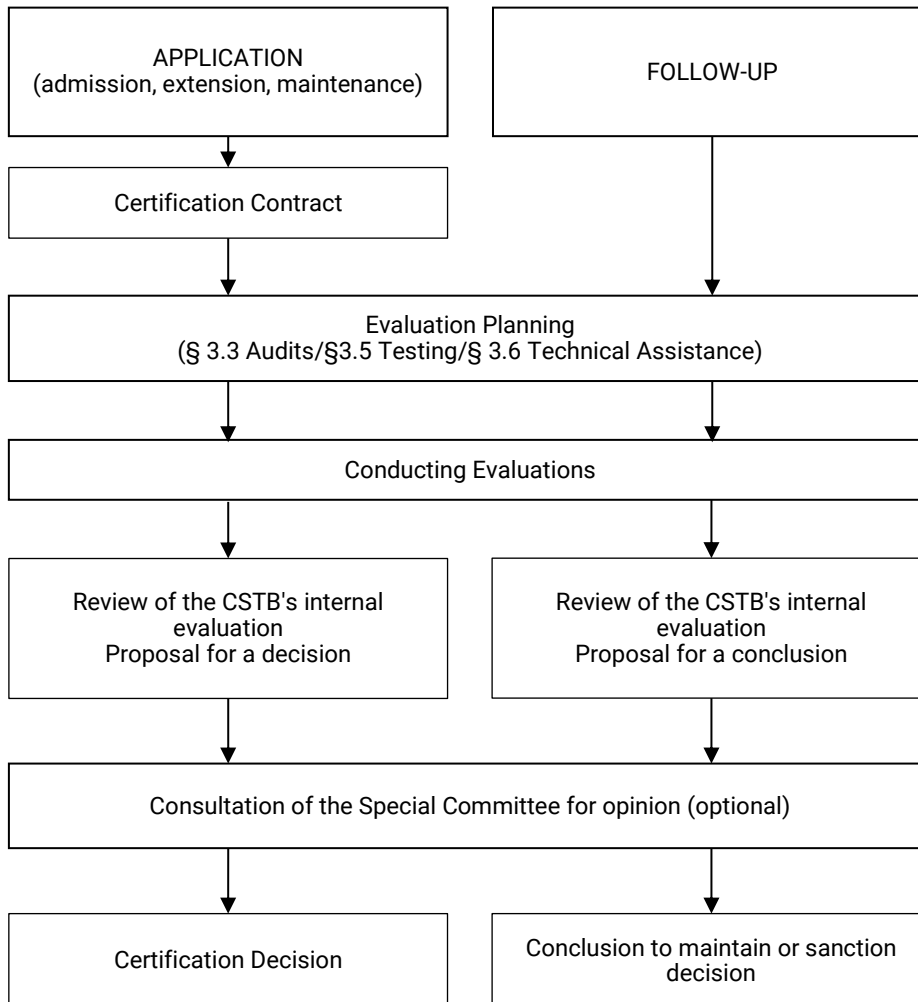
Certification Process

3.1 General

- Definition of the applicant (see part 5);
- Definitions of the different types of application (application for admission / application for additional admission / request for extension / request for maintenance):
 - An application for admission comes from an applicant who does not have the right to use the QB trademark alone for the application "Flexible wall membranes" and the product concerned (Rainscreen or Water Protection Membrane). It corresponds to a product (or a range of products) resulting from a specific design process and/or manufacturing site and/or a specific marketing site, defined by a trademark and/or having a specific reference to the product presented and technical characteristics;
 - An application for additional admission/extension comes from a holder and concerns a new product / a modified product on the same production site;
 - A request for maintenance comes from a holder and concerns a QB-certified product alone or associated with the classification defined in Technical Annex QB38, intended to be marketed under another commercial brand and/or having a specific reference to the product without modification of the certified characteristics;
 - A new application for the admission of a product (or a range of products) following a sanction of withdrawal of the right to use the QB trademark is initiated in the case of an act of misleading commercial practice pursuant to Articles L121-2 to L121-5 of the Consumer Code.



3.2 Certification program



The procedures for obtaining and monitoring a certification are described in parts 1 and 2 of the Administrative Annex of this certification standard.



3.3 Audits

3.3.1 ADMISSION AUDITS

The purpose of the audits is to ensure that the provisions defined and implemented by the applicant in the manufacturing unit meet the requirements of Part 2 of this certification standard and the QB38 Technical Annex.

The aim is to verify, prior to admission, the existence and effectiveness of the quality measures taken and of the control carried out by the applicant. These are the admission audits performed by the auditor.

If the applicant subcontracts part of its manufacturing, the CSTB reserves the right to carry out an audit at the subcontractor(s) based on this certification standard.

All the means (premises, facilities, equipment) enabling the auditor to carry out the task incumbent on him must be made available free of charge, as well as the persons competent to implement them.

The auditor, in the event of a situation of danger regarding the safety requirements of the certifying body, reserves the right to exercise a right of withdrawal.

An audit report is drawn up and sent to the applicant.

3.3.1.1 First-time application

The audit time is normally daylight per manufacturing unit. 1

The duration of the audit can be adjusted according to the risk: level of development of the quality system, organization of the company (process, laboratory, etc.).

3.3.1.2 In the case of an application for supplementary admission

The steps described in paragraph 3.3.1 above are applicable with the specificity that the audit can be adapted or combined with a follow-up audit.

3.3.1.3 Cases of an extension request

The steps described in paragraph 3.3.1 above are applicable with the following specificities:

- In the context of an extension request for a certified modified product, the tests are defined according to the proposed modification;
- The audit can be adapted or combined with a follow-up audit.

3.3.2 FOLLOW-UP AUDITS

The purpose of follow-up audits is to verify, after admission, that the defined provisions are still maintained.

All the provisions described in paragraph 3.3.1 shall apply.

Controls

The auditor shall carry out, at a minimum, the following tasks, considering the information gathered during the previous audit, the results of the latest controls and any remarks made by the Special Committee:

- verification of the effective implementation of the corrective measures announced following any observations made during the previous audit;



- verification of compliance with the holder's quality requirements defined in this certification standard;
- the verification of self-control registers since the last audit, statistically for at least one certified product and for the products subject to the sample for testing at the brand's laboratory;
- verification of business documents;
- verification of changes in the characteristics of certified products.

An audit report shall be drawn up and sent to the contractor.

The audit time is normally daylight per manufacturing unit. 1

The duration of the audit can be adjusted according to the risk: level of development of the quality system, organization of the company (process, laboratory).

Normal Follow-up:

The normal frequency is an annual audit per manufacturing unit benefiting from a QB trademark right to use. 1

Stiffen Follow-up:

In the event of non-compliance with the requirements of this certification standard, or upon a reasoned request from the Special Committee, the stiffen surveillance procedure may be triggered for a defined period. This monitoring can be modulated up to the doubling of the normal frequency of audits, with or without reinforcement of the controller's controls and samples for testing in the manufacturing unit and/or in the distribution network.

Similarly, any critical deviation that occurs during an audit, whether it is accompanied by a sanction, may justify a move to enhanced surveillance. This will be triggered at the initiative of the CSTB, possibly after consultation with the Special Committee, for a defined period, with or without strengthening the controls of the holder and samples taken for testing.

Reduced Monitoring:

If the manufacturing unit has not been subject to any non-compliance, warning, or sanction in the last 3 years, reduced monitoring may be applied.

If the holder has a valid ISO 9001 certificate, the CSTB may also apply reduced monitoring in accordance with Part 2.

The frequency of audits is reduced to every three years. 1

In the event of loss of the ISO 9001 certificate or if the factory is subject to a sanction, the frequency of audits automatically reverts to that of normal monitoring for a minimum period of one year. 1

3.4 Sampling

In the case of admission/extension sampling:

The auditor shall have the samples necessary to carry out the tests taken from the stock and/or from the manufacturing unit (1 roll per certified product). It is possible, for certain destructive tests, to take products that have been disposed of for minor defects in appearance that do not result in the non-conformity of the certified products.



In the case of samples sent to the brand's laboratory, the samples taken are marked with a distinctive sign by the auditor; They are sent by and under the responsibility of the applicant to the brand's laboratory responsible for carrying out the tests within the time limit set at the time of sampling, unless the auditor decides to pay for them.

A record of the samples taken is drawn up on the spot and given to the applicant/holder.

A copy of this sample form will be systematically sent to the laboratory responsible for carrying out the tests.

It is accepted that, if it is impossible to take these samples, the holder must send the sample(s) requested by the CSTB, within the prescribed deadlines, to the brand's laboratory. If the applicant does not send the sample(s) to the brand's laboratory within the time limits prescribed by the CSTB, sanctions may be taken against him (sanction, suspension).

In the case of follow-up samples:

In the year in which the follow-up audit does not take place, the manufacturer must send the products to the brand's laboratory within the time limit mentioned in the sampling form based on a choice by the manager. Sample collection for testing can be done remotely at the beginning of the year.

If the applicant does not send the samples to the brand's laboratory within the time limits prescribed by the CSTB, sanctions may be taken against him (sanction, suspension).

Where declared minor modifications have been made to the products or changes which have also been declared minor in the production process of the products and the proprietor cannot prove that they have no effect on the certified characteristics, samples shall be systematically taken and tests carried out in the mark's laboratory, with a view to verifying the characteristics involved.

In the case of an additional audit, the tests induced by the non-conformity are carried out by the brand's laboratory.

In the event of non-compliance with the tests carried out by the brand's laboratory, the offending reference will be taken from the manufacturer's laboratory during the second half of the year audit, or remotely (choice from a list of batches proposed by the manufacturer) or in the trade and will be tested by the brand's laboratory.

Controls in trade:

In the case of distributors holding a right of use, checks may be carried out at the initiative of the CSTB.

On-the-market checks may be carried out for products marketed by distributors who retain the right to use the QB trademark. The CSTB carries out marking, appearance, and dimensional checks on these products. The CSTB reserves the right to sample, if necessary, these products for testing at the brand's laboratory.

The costs of these inspections shall be borne by the distributor, in accordance with Part 4 of the Annex to this certification standard.

3.5 Tests

3.5.1 ADMISSION/EXTENSION TESTS

Intake tests shall be carried out in accordance with the additional standards and specifications set out in technical document DT 99038-01.



Shear and peeling tests on junctions can be carried out by the FCBA laboratory, which has signed a reconnaissance contract with the CSTB. This agreement precisely defines the criteria for this recognition of an ISO 17025 accredited laboratory.

A test report shall be drawn up and sent to the applicant.

The tests are carried out under the responsibility of the brand's laboratory or by an independent and competent laboratory recognized by the certifying body or under the supervision of a qualified auditor of the certifying body. A test supervision sheet is attached to the audit report.

If non-compliant results are detected, a retest will be carried out at the brand's laboratory on a new batch of the product concerned.

3.5.2 TESTING OF CERTIFIED PRODUCTS (FOLLOW-UP)

Follow-up tests shall be carried out in accordance with the additional standards and specifications set out in the technical annex to this certification standard.

A test report shall be drawn up and sent to the holder.

These tests on certified characteristics are carried out:

- Or in the mark's laboratory ([Technical Appendix, Part 4, Table 5](#)).
- Or in the laboratory of the manufacturing unit under the supervision of a qualified auditor from the CSTB ([Technical Annex, Part 4, Table 5](#)).

As part of the audit, tests on certified characteristics are carried out in the laboratory of the manufacturing unit under the supervision of a qualified auditor from the CSTB. This laboratory must have equipment to perform the test under the conditions required by the standard (or reference test methods).

In the case of a licensed distributor, a copy of the test report is sent to the manufacturer by the CSTB.

If non-compliant results are detected following follow-up samples, a counter-test will be carried out at the brand's laboratory on a new batch. The certificate of the product concerned may be subject to a sanction (suspension/withdrawal).

Rolls from the same batch or a new batch (at the manager's discretion) must be sent within 2 months of notification of the non-compliance. In the event of non-compliant retest results, the right to use the product may be suspended.

An additional audit will be carried out to lift the suspension.

In the case of an additional audit, the tests induced by the non-conformity are carried out by the brand's laboratory.

3.6 Technical Assistance Evaluation

The certificate holder must justify his/her capacity for Technical Assistance and the means implemented to ensure it. To do this, a list of "Site References" must be provided as well as the commercial brochures, installation instructions or any technical document, product marking as well as updated labels distributed or made available on a website.

The CSTB will verify that these documents comply with the rules for the implementation of the products covered by the certification.

QB 38 Certification Reference System
Flexible Underlays for Waterproofing for Walls
Revision No.: 04



In the case of a first request from applicants who do not hold a certification, the evaluation of the technical assistance will be done through a multiple-choice questionnaire submitted to the referents in charge of this mission and designated by the holder.

If the answers provided are not satisfactory, an action plan will be required. This plan must demonstrate the training of the technical assistance referent in the technical and regulatory context. A second assessment will be carried out within 2 months via a new MCQ with the possible planning of a site visit.

Each time there is a change of contact in the technical assistance structure, the CSTB must be notified.

In the case of a new application from an applicant who already holds a QB38 certificate, a new evaluation of the technical assistance is not required, unless there is a change in the structure that provides the technical assistance.

Note: as part of an applicant's application for admission, site references must be provided within 5 months (from the date of obtaining certification). In case of non-compliance with the granted period, the certificate will be suspended.



Part 4

Stakeholders

The bodies involved in the procedure for granting the right to use the QB trademark and the monitoring of certified products are specified below.

4.1 The Certifying body

The CSTB is the certifying body that owns the QB brand, it defines the governance rules and operating procedures of the brands and assumes responsibility for the application of the standard and the decisions taken within it.

Centre Scientifique et Technique du Bâtiment (CSTB)
Direction Enveloppe du Bâtiment
Division Certification et Evaluation de l'Enveloppe du Bâtiment (C2EB)
84, avenue Jean Jaurès
Champs sur Marne
F-77447 Marne La Vallée Cedex 2
☎: +33 (0)1 64 68 82 74

<https://evaluation.cstb.fr/>

4.2 Auditing Bodies

The audit functions of the manufacturing unit, and possibly at the place of use, are carried out by the following body, known as the audit body:

Centre Scientifique et Technique du Bâtiment (CSTB)
Direction Enveloppe du Bâtiment
Division Certification et Evaluation de l'Enveloppe du Bâtiment (C2EB)
84, avenue Jean Jaurès
Champs sur Marne
F-77447 Marne La Vallée Cedex 2
☎: +33 (0)1 64 68 82 74

<https://evaluation.cstb.fr/>

Auditors have the right to inspect the homes of any applicant or staff member in the context of their mission.



4.3 Test Organizations

When the checks carried out, in the context of the use of the QB mark, include tests on products, these are carried out at the request of the CSTB by the following laboratory, known as the brand laboratory:

Centre Scientifique et Technique du Bâtiment (CSTB)
Direction Enveloppe du Bâtiment
Division Certification et Evaluation de l'Enveloppe du Bâtiment (C2EB)
84, avenue Jean Jaurès
Champs sur Marne
F-77447 Marne La Vallée Cedex 2

<https://evaluation.cstb.fr/>

Shear and peel tests on junctions may be carried out by the laboratory designated below, which has signed a reconnaissance contract with the CSTB. This agreement precisely defines the criteria for this ISO 17025 accredited laboratory recognition.

SUBCONTRACTOR TEST LABORATORIES:

Institut Technologique FCBA,
Institut Technologique Forêt Cellulose Bois-construction Ameublement
Allée de Boutaut
BP 227
33 028 BORDEAUX Cedex

Sampling rules:

- ❖ The sample must comply with the provisions defined in the CSTB certification standard:
 - Sampling by the applicant or by an auditor acting in the context of the ISO 17020 or ISO 17065 norm,
 - Compliance with the rules of sampling, traceability, preservation of samples, etc.
- ❖ The Organization must communicate to the CSTB, as an annex to the report, the sampling form completed and communicated to the Organization by the applicant of the test, etc.

4.4 Subcontracting

The various functions described in paragraphs 3.9 and 3.10 may be carried out, after any opinion of the Special Committee, by other auditing bodies or recognized laboratories with which the CSTB has established a subcontract.

The client is informed of the contracting out of a service when the program of evaluation activities is established. Where appropriate, he shall be formally informed before any commitment to activity'.

4.5 Special Committee

An impartial consultative body called the Special Committee is set up, the secretariat of which is provided by the CSTB.

The Special Committee is responsible for giving its opinion on:

- the initial project or revision of the certification standard, within the meaning of the Consumer Code,
- advertising and promotional projects falling within the scope of its activity,



- the selection of bodies involved in the certification process, the review and the implementation of recognition agreements.

It may be consulted on any other matter of interest to the application concerned and in particular on any interpretation of the certification standard with a view to decisions to be taken on files in compliance with the certification standards and at the request of the CSTB.

The composition of the Select Committee shall be set in such a way as to respect representation between the various parties concerned which does not lead to the predominance of one of them and which guarantees their relevance.

Its composition is as follows:

- A President chosen from among the members of the colleges defined below;
- A vice-president: a representative of the CSTB.
- College of Manufacturers (Holders): 3 from to 7 representatives;
- College of Users / Prescribers: from 3 to 7 representatives;
- College of Technical Bodies and Administrations: 3 from to 7 representatives.

Representatives of the brand's audit bodies and laboratories participate in the meetings of the Special Committee as of right.

The Select Committee issues notices of decision and its members may not receive any remuneration for the functions entrusted to them.

The term of office of the members is three years. This mandate is tacitly renewable for successive periods of one year up to a maximum of three renewals, unless terminated without just cause by the CSTB or the member, by registered letter with acknowledgement of receipt, three months before the end of the current period at the time of renewal.

When an active member whose 6-year term of office has expired wishes to continue his or her participation in the work of the committee, he or she shall inform the CSTB. The Technical Director of the CSTB decides, if necessary, to renew his mandate for a period of 12 months.

The members of the Special Committee formally undertake to maintain the confidentiality of the information, particularly of an individual nature, that is communicated to them.

The Select Committee may, if necessary, decide to set up working groups or sub-committees whose missions and responsibilities it defines as follows. The composition of these working groups is validated by the Special Committee, these working groups being composed of at least one representative of the "Manufacturers" college, one representative of the "Users/Prescribers" college and one representative of the CSTB. Professionals or external personalities or members who are not members of the Special Committee may be called upon.



Part 5

Lexicon

Technical Approval (ATec):	The Technical Approval or ATec refers to the opinion formulated by a group of experts representative of the professions, called the Specialized Group (GS), on the suitability for use of innovative construction processes. Technical Opinions are issued by the Commission in charge of formulating Technical Opinions (CCFAT) attached to the Ministry of Construction and Housing.
Technical Assessment of Experimentation (ATEX):	The Technical Experimentation Assessment, or ATEX, is a rapid technical evaluation procedure formulated by a group of experts on any innovative product or process. This evaluation allows for initial feedback on the implementation of products or processes prior to a Technical Approval. It also validates innovative designs. Examples of ATEX: lightweight facades, glass roofs, reversible floors, roof waterproofing, structural reinforcement, etc.
Granting the right to use the QB trademark:	Authorization granted by the CSTB to an applicant to affix the QB mark to the product for which the application was made.
Admission:	An application by which an applicant applies for the first time for the right to use the QB trademark for a product; He/she declares that he/she is familiar with this certification standard and undertakes to comply with it.
Complementary Admission:	An application by which a proprietor wishes to benefit from the right to use the QB trademark for a new product or production entity.
Audit:	See NF EN ISO 9001 standard.
Warning:	Non-suspensive sanction notified by the CSTB, the product is still marked but the holder must correct the discrepancies within a defined period. When a warning is accompanied by an increase in controls, actions must be taken within a defined time frame. The warning can only be renewed once.
Applicant/Holder:	<p>Legal entity that ensures control and/or responsibility for compliance with all the requirements defined in the QB brand certification standard. These requirements cover at least the following steps: design, manufacture, assembly, quality control, marking, packaging and placing on the market and specify the critical points of the various stages.</p> <p>Any person who alters the container and/or contents of the product (e.g., bagging or bulk distribution of cement), becomes an applicant and cannot be considered a distributor. As such, this person must apply for admission of the right of use.</p>



Distributor:	<p>Person distributing the applicant's/holder's products, who does not intervene on the product to change the conformity with the requirements of the QB mark.</p> <p>The types of dispensers can be as follows:</p> <ul style="list-style-type: none">- distributors who distribute the product under the licensee's brand name. In this case, no action is required under the QB trademark.- distributors who distribute the product with a change of trademark. The applicant/holder must submit a request to maintain the right of use. <p>If the distributor does not wish to make explicit reference to the manufacturer, an application for admission to the QB mark must be made by the distributor. In this case, the manufacturing plant is not mentioned on the certificate.</p> <p>Depending on the operations carried out by the applicant/holder or the distributor, the sites audited and the duration of the audit as part of the initial certification or monitoring are defined on a case-by-case basis.</p>
Unified Technical Document (NF DTU):	<p>The NF DTU are standards that specify the technical conditions for the proper execution of works.</p>
Technical Application Document (DTA):	<p>The Technical Application Document is comparable to a Technical Opinion, except that it covers only applications for a product, which is subject to a CE marking.</p>
Extension:	<p>Application by which a proprietor requests the extension of the right to use the QB trademark that he owns for a certified product whose characteristics have been modified.</p>
Proxy:	<p>Legal or natural person established in E. E.E., which has a function of representing the applicant/holder outside the E.E.E.E. and has a written mandate from the latter indicating that it can act on its behalf and specifying in what context (missions and associated responsibilities and financial aspects, complaints, contact of the certifying body, among others) in the process of certification of the QB mark according to the provisions of the certification standard.</p> <p>The agent can be the distributor or the importer, his different functions are clearly identified.</p> <p>The concept of agent is essential when applicants are outside the EEA. Depending on the market, the concept of distributor may not be relevant.</p>
Maintenance:	<p>Application by which a proprietor requests the maintenance of the right to use the QB mark for a product intended to be marketed by a distributor under another brand and/or commercial reference, but without modification of the certified characteristics.</p>



Product:	Element resulting from a process or a manufacturing process, originating from a specific manufacturing unit, defined by a specific trademark and/or commercial reference with specific technical characteristics.
Certification Program:	Specific certification system for specific products, to which the same specified requirements, specific rules and procedures apply.
Admissibility:	Study of a file that allows the application to be examined. Admissibility relates to the administrative and technical parts of the case.
Renewal:	Application by which the proprietor requests the renewal of the right to use the QB mark before the end of the validity of his QB certificate.
Certification Framework:	A technical document defining the characteristics to be exhibited by a product, service or combination of products and services, and how to monitor compliance with these characteristics, as well as how to communicate about the certification (including the content of the information).
Withdrawal of the right of use:	Decision notified by the CSTB cancelling the right to use the QB trademark. Withdrawal may be ordered as a sanction or in the event of abandonment of the right to use the QB trademark by the owner.
Outsourcing:	Company carrying out part of the production steps of the certified product, under the control of the QB trademark holder.
Suspension:	<p>Decision notified by the CSTB which provisionally and for a fixed period cancels the authorization of the right to use the QB trademark. The suspension may be notified as a sanction or in the event of the temporary abandonment of the right to use the QB trademark by the proprietor.</p> <p>The suspension is accompanied by a ban on affixing the mark to future production. It must be for a maximum period of 6 months, renewable once, at the end of which the right to use the QB trademark must be withdrawn if no action has been taken by the owner.</p> <p>Notifications of sanctions affecting the right of use (suspension/withdrawal) are signed by the CSTB management.</p>



CERTIFICATION

QB Certification Administrative Management Appendix: Flexible underlays for waterproofing for walls



Identification number: QB 38
Revision No.: 04
Effective Date: 15/04/2024



TABLE OF CONTENTS

Part 1	Certification Application	3
1.1	Submission of a first application for admission	3
1.2	Application for Complementary Admission	5
1.3	Extension Request	5
1.4	Request for Maintenance	5
Part 2	Bringing certification to life: monitoring methods	6
2.1	Follow-up Control Procedures	6
2.2	Evaluation Review and Decision	7
Part 3	Certification Records	8
3.1	First-time application	8
3.2	In the case of an application for supplementary admission	8
3.3	Cases of an extension request	8
3.4	In the case of a request for maintenance	8
3.5	Case of a new application for admission following a sanction of withdrawal of the right to use the QB trademark	9
Part 4	Prices	20
4.1	Services related to QB certification	20
4.2	Recovery of benefits	21
4.3	Cancellation of an audit or trial by the applicant/holder	22
4.4	Prices	22



Part 1

Certification Application

1.1 Submission of a first application for admission

1.1.1 SUBMISSION OF THE APPLICATION PACKAGE

The application must be submitted in accordance with the conditions and templates set out in Part 3 (paragraph 3.1).

If the product comes from a manufacturing unit outside the European Economic Area, the applicant shall appoint an authorized representative in the EEA who shall co-sign the application.

Upon receipt of the application, the following process is initiated:

- administrative and technical review of the application;
- implementation of the evaluation (audits and trials);
- review of the evaluation;
- decision.

1.1.2 ADMINISTRATIVE AND TECHNICAL REVIEW OF THE APPLICATION

Upon receipt of the application file, the CSTB verifies that:

- all documents requested in the application file are attached;
- The elements contained in the technical file comply with the requirements of the certification standard.

The application is only admissible if:

- The request letter is completed, signed and, if applicable, accompanied by the signed quote;
- the applicant controls and assumes responsibility for the following steps: design, manufacture, assembly, quality control, marking, packaging and placing on the market, and specifies the critical points of the various stages;
- Any aspect not carried out by the applicant is the subject of a contract defining the respective responsibilities with its service provider. The applicant remains responsible for all operations and their consistency;
- the products that are the subject of the application comply with the reference standards and technical specifications set out in Part 2 of this certification standard;
- the controls and tests concerning the products that are the subject of the application, provided for in this certification standard and technical document 99038-01, are put in place;
- All the requested documents shall be attached to the application, in particular the contractual elements of the applicant/agent and applicant/distributor relationship, if applicable.

The applicant undertakes to provide the environmental statement, verified if applicable, or the reference of the place where it is available.



The CSTB also ensures that it has all the means to respond to the request and may be required to request the additional information necessary for the admissibility of the file when it is incomplete.

As soon as the application is admissible, the CSTB organizes the evaluation and informs the applicant of the organizational arrangements (auditor, duration of the audit, sites audited, laboratories, products sampled, etc.).

1.1.3 MODALITIES OF THE EVALUATION

The controls carried out within the framework of the QB brand are:

- audits carried out on the manufacturing unit, including the supervision of tests on certified characteristics;
- product testing in the brand's laboratory.

They are supplemented by the use of post-audit control registers, an assessment of the competence of the contractor's technical assistance, etc.

Evaluations result in a report: audit report, test report, etc.

In the event of a discrepancy, the applicant must:

- 1 - propose an action plan to the CSTB within 15 days of notification of the deviation,
- 2 - Implement an action plan within a period of:
 - ➔ 3 months in the case of a critical deviation,
 - ➔ 6 to 12 months in the case of a non-critical deviation.

Audit reports may mention sensitive points. The latter report deviations in the performance of the product/service. They do not require corrective actions. However, they are analyzed as part of the next assessment and can be reclassified as deviations in the event of drift that has resulted in non-compliance with the requirements of the standard.

1.1.4 EVALUATION REVIEW AND DECISION

In particular, the CSTB evaluates the test and audit reports drawn up and sent to the applicant (evaluation review).

In some cases, the CSTB may, as soon as it has analyzed the reports, request that an additional audit be carried out.

The applicant must present, for each deviation, the actions put in place or envisaged with a relevant implementation deadline in view of the deviation found. The persons responsible for the actions to be taken must also be indicated.

The CSTB analyses the relevance of the response and may request that an additional check be carried out to verify the implementation of corrective actions (full or partial audit and/or tests/documentary verification).

The CSTB may present a summary of all the evaluation results to the Select Committee for its opinion, anonymously.

Based on the results of the overall assessment, the CSTB makes one of the following decisions:

- certification agreement, with or without comments;
- refusal of certification, giving reasons for the refusal.



Certificates are issued without a validity date.

The applicant may contest the decision taken by applying in accordance with the General Rules of the QB trademark. It shall have the opportunity to formally present its position.

The holder can then communicate about his certification in accordance with the terms and conditions defined in Part 2 of the certification standard.

1.2 Application for Complementary Admission

The steps described in paragraph 1.1 above apply. The application must be submitted in accordance with the conditions and templates set out in Part 3 (paragraph 3.2).

1.3 Extension Request

The steps described in paragraph 1.1 above apply. The application must be submitted in accordance with the conditions and templates set out in Part 3 (paragraph 3.3).

1.4 Request for Maintenance

The application must be submitted in accordance with the conditions and templates set out in Part 3 (paragraph 3.4).

In the context of distribution under other trademarks, it is permissible to make certain presentation adjustments to the products concerned which have no functional effect. The registrant must then specify in its request for maintenance the list of changes made to the products in question.

The CSTB then ensures that these developments have no functional impact.

The Special Committee is informed of the decisions to maintain the right of use notified by the CSTB.

The company distributing the certified products must provide the CSTB with all commercial documents (catalogues, brochures, websites, etc.) that refer to these products for each new version of these documents.

<Controls on the trade (trades, supermarkets, etc.) of the products that are the subject of an application for the maintenance of the right of use may be carried out by the CSTB.



Part 2

Bringing certification to life: monitoring methods

Throughout the duration of the certification, the holder must:

- comply with the requirements and marking procedures described in Part 2 of the certification standard;
- update its certification file using the templates provided in Part 3 of this Annex;
- systematically inform the CSTB of any change in any of the characteristics of the certified product, and/or its organization that may have an impact on the certification.

In addition, the CSTB reserves the right to carry out any control (visits, tests, verifications, etc.) that it deems necessary because of:

- a change in the certified product or the quality organization of the manufacturing entities (manufacturing plant, manufacturing shops, subcontractors' factory, etc.);
- claims, disputes, disputes, etc. of which he is aware and relating to the use of the QB mark;
- Checks (including sampling) may be carried out in the trade.

In the event of disputes with users, the checks may include sampling or testing at the place of use (in which case the holder is invited to be represented to attend).

2.1 Follow-up Control Procedures

Follow-up of certified products includes follow-up audits of the manufacturing unit including the supervision of tests on certified characteristics and tests on products.

It also includes monitoring the use of the trademark and logos on products, packaging and any communication media.

The reports shall be accompanied, where appropriate, by discrepancy sheets, with a request, within a prescribed period, for a proposal for corrective action by the holder. Discrepancies shall be dealt with in accordance with the provisions set out in § 1.1.3.

The follow-up modalities depend on:

- whether or not the holder has ISO 9001 certification, in accordance with Part 2 of this certification standard;
- decisions taken as a result of previous checks (audits and tests);
- possible reliefs.

Before initiating the monitoring process, the CSTB carries out an administrative and technical review of the certification file to ensure that no changes impacting the latter are to be taken into consideration.



2.2 Evaluation Review and Decision

The CSTB evaluates the test and audit reports drawn up and sent to the licensee (evaluation review).

In some cases, the CSTB may, as soon as it has analyzed the reports, request that an additional audit be carried out.

The holder must present, for each deviation, the actions implemented or envisaged with a deadline for implementation relevant to the deviation found. The persons responsible for the actions to be taken must also be indicated.

The CSTB analyses the relevance of the response and may request that an additional check be carried out.

The CSTB may present a summary of all the evaluation results to the Select Committee for its opinion, anonymously and the conclusions of the evaluations.

Based on the results of all the controls, the CSTB concludes on the assessment, which can be:

- conclusion to maintain the certificate, or
- sanction decision in accordance with the General Requirements of the QB Mark.

Where there is a sanction, it is enforceable from the date of its notification. The choice of sanction depends on the degree of seriousness of the deviation. Notifications of sanctions relating to the right of use are signed by the Application Manager and the Technical Department of the CSTB.

The costs associated with additional checks, incurred because of the penalties or after analysis of the reports, shall be borne by the holder.

The holders and their distributors who benefit from a right of use are each responsible for the right to use the QB trademark relating to the product in question and undertake to apply the measures resulting from the sanctions taken in accordance with the certification standard.

Any suspension or withdrawal of the right to use the QB mark will result in a ban on the use of and reference to the QB mark. This obligation applies not only to the holder but also to the entire commercial network of his company, as well as to the traders called upon to distribute his products.

All documentation (technical and commercial documents, labels, posters, advertising, websites, etc.) must no longer refer to the QB mark for the product subject to suspension or withdrawal (erratum and/or withdrawal).

The owner may contest the decision made by submitting a request in accordance with the General Rules of the QB trademark. It shall have the opportunity to formally present its position.



Part 3

Certification Records

The application for a right of use must be drawn up by the applicant/holder in one copy according to the cases and models defined below. This request must be made in **1 original on the applicant's letterhead in French** and the whole must be sent to the CSTB.

If the product comes from a manufacturing unit located outside the European Economic Area, the applicant shall appoint an authorized representative in the European Economic Area who shall co-sign the application.

An application for a product that benefits from a foreign conformity mark, or a test certificate issued by a foreign laboratory is processed taking into account existing recognition agreements, in accordance with the General Requirements of the QB mark.

Note: Electronic versions of the sample letters and fact sheets can be obtained from the CSTB.

3.1 First-time application

The applicant shall prepare a file containing:

- a letter of request and commitment from the applicant according to standard letter 1;
- a general information sheet concerning the applicant according to standard form 3;
- one technical data sheet per product according to standard sheet 4.

3.2 In the case of an application for supplementary admission

The holder shall prepare a file containing:

- a letter of request and undertaking from the incumbent in accordance with form letter 1.
- a general information sheet concerning the applicant according to standard form 3;
- one technical data sheet per product according to standard sheet 4.

3.3 Cases of an extension request

The holder shall prepare a file containing:

- a letter of request and commitment from the holder in accordance with form letter 2A;
- one technical data sheet per product according to standard sheet 4.

3.4 In the case of a request for maintenance

The holder shall prepare a file containing:

- a letter of request and commitment from the holder in accordance with standard letter 2B;



- a distributor's commitment form (visa) on the Company's letterhead, according to form letter 2B (continued).

3.5 Case of a new application for admission following a sanction of withdrawal of the right to use the QB trademark

The holder shall prepare a file containing:

- a letter of request and commitment from the applicant according to standard letter 1;
- a general information sheet concerning the applicant according to standard form 3;
- a technical data sheet for each product according to standard sheet 4;
- the specific elements to be provided in the context of a new application for admission by any applicant whose right of use has been withdrawn following a sanction according to standard form 5.



SAMPLE LETTER 1

QB BRAND – Flexible underlays for waterproofing for walls

**QB TRADEMARK RIGHT TO USE APPLICATION FORM
OR EXTENSION OF THIS RIGHT FOR A NEW PRODUCT (SUPPLEMENTARY ADMISSION)**

(to be drawn up on the applicant's/holder's letterhead)

Centre Scientifique et Technique du Bâtiment
Direction Enveloppe du Bâtiment/Division
Evaluation et Certification de l'Enveloppe du
Bâtiment (C2EB) 84, avenue Jean
Jaurès/Champs sur Marne/F-77447 Marne La
Vallée Cedex 2

Object: **Application for admission of the right to use the QB trademark - / Application for additional admission of the right to use the QB trademark Flexible underlays for waterproofing for walls** ⁽¹⁾

Sir

I have the honor to request the right to use the QB trademark:

- for the following product/product range: (detailed list of the product/product range or specify "according to the list attached to this application");
- manufactured in the following manufacturing unit: (company name, address);
- and for the following trade name: (trademark and/or specific trade reference, which may be listed as part of this application).

To this end, I declare that I know and accept the General Requirements of the QB Mark, the QB Mark Certification Standard, and undertake to comply with them and to inform my commercial network throughout the duration of use of the QB Mark, and in particular to comply without restriction or reservation with the decisions taken in accordance with the General Requirements of the QB Mark and the QB Mark Flexible underlays for waterproofing for walls Certification Standard.

OPTION (if applicable): <I declare that the products/product lines that are the subject of this application ⁽¹⁾:

- are not subject to an environmental declaration;
- < are the subject of an environmental declaration > < are the subject of an EPD/PEP/other environmental declaration (to be specified) > < individual > < collective > < self-declarative > < that has been verified by (name/date): ... > ⁽¹⁾

This statement can be found at: (attach statement)>

(2) <Option>: <I also authorise the Company (company name), (company status), (registered office) represented by M/Mrs/Melle (name of legal representative) in its capacity as (function) to represent me in the European Economic Area in all matters relating to the use of the QB trademark – Flexible underlays for waterproofing for walls

I undertake to immediately notify the CSTB of any new appointment of the above-mentioned representative.

In this regard, I request that the costs for which I am responsible be invoiced directly. She will ensure payment on my behalf and in my name, as soon as she receives the invoices, as she undertakes to do by accepting the representation>

I beg you to accept, Sir, the expression of my distinguished consideration.

Date and signature of representative
representative
Applicant's Legal Status/ holder

(2) Date and signature of
in the European Economic Area
Preceded by handwriting
"Good for acceptance of representation"

⁽¹⁾ Strike out unnecessary reference(s)

⁽²⁾ Applies only to applicants or holders located outside the European Economic Area (EEA).



FORM LETTER 2A
QB BRAND – Flexible underlays for waterproofing for walls

APPLICATION FORM FOR EXTENSION OF THE RIGHT TO USE THE QB TRADEMARK FOR A MODIFIED PRODUCT

(to be drawn up on the holder's letterhead)

Centre Scientifique et Technique du Bâtiment
Direction Enveloppe du Bâtiment/Division
Evaluation et Certification de l'Enveloppe du
Bâtiment (C2EB) 84, avenue Jean
Jaurès/Champs sur Marne/F-77447 Marne La
Vallée Cedex 2

Object: Application for extension of the right to use the QB trademark - for a modified product Flexible underlays for waterproofing for walls

Sir

As the owner of the QB trademark – for the product of my manufacture identified under the following references:
Flexible underlays for waterproofing for walls

- Product Description/Product Range:
- Manufacturing Unit:
- trademark:
- Specific commercial reference:
- Right of use granted on (date) and bearing the number:

I have the honor to apply for the right to use the QB trademark for the product/range of products of my manufacture, deriving from the product/range of products certified by the following modifications:

This product/product line in application for extension will replace the certified product mentioned above:

- NO (1);
- YES (1).

I declare that the products/range of products that are the subject of this application are, for the other characteristics, strictly in accordance with the product/range of products already certified and manufactured under the same conditions.

To this end, I declare that I know and accept the General Requirements of the QB Mark, the QB Mark Certification Standard, and undertake to comply with them and to inform my commercial network throughout the duration of use of the QB Mark and in particular to comply without restriction or reservation with the decisions taken in accordance with the General Requirements of the QB Mark and the QB Mark Flexible underlays for waterproofing for walls Certification Standard

I declare that the products/product lines that are the subject of this application ⁽¹⁾:

- are not subject to an environmental declaration;
- < are the subject of an individual > <> < self-declaratory > < self-declaratory EPD/PEP/other environmental declaration (to be specified) > < have been verified by (name/date): > (1)

This statement can be found at: (attach statement)

I beg you to accept, Sir, the expression of my distinguished consideration.

Date and signature of representative
representative
Holder's Legal Status

Date and signature of
in the European Economic Area ⁽²⁾

⁽¹⁾ Strike out unnecessary reference(s)

⁽²⁾ Applies only to applicants located outside the European Economic Area.



FORM LETTER 2B
QB BRAND – Flexible underlays for waterproofing for walls

APPLICATION FORM FOR MAINTENANCE OF THE RIGHT TO USE THE QB TRADEMARK

(to be drawn up on the holder's letterhead)

Centre Scientifique et Technique du Bâtiment
 Direction Enveloppe du Bâtiment/Division
 Evaluation et Certification de l'Enveloppe du
 Bâtiment (C2EB) 84, avenue Jean
 Jaurès/Champs sur Marne/F-77447 Marne La
 Vallée Cedex 2

Object: **Application to maintain the right to use the QB trademark Flexible underlays for waterproofing for walls**

Sir

I have the honor to request that the right to use the QB mark be maintained on goods which differ from those admitted to the mark only by their trademarks and/or their specific commercial references affixed to them and, where appropriate, by arrangements which do not in any way alter their certified characteristics.

Identification of products eligible for the QB mark		Specific trademark and/or trade reference requested by the distributor
Certificate No.	Registrant's product description and reference	

The company that will distribute these products (distributor) under the new trademark requested has the following contact details:

Name:

Address:

I undertake to provide the above-named distributor with the QB brand certification standard Flexible underlays for waterproofing for walls and the marking provisions set out in § 2.6 of the same certification standard>

I undertake to immediately inform the CSTB of any change made in the distribution of these products and in particular any cessation of supply from the above-named distributor.

To this end, I declare that I know and accept the General Requirements of the QB Mark, the QB Mark Certification Standard, and undertake to comply with them and to inform my commercial network throughout the duration of use of the QB Mark and in particular to comply without restriction or reservation with the decisions taken in accordance with the General Requirements of the QB Mark and the QB Mark Flexible underlays for waterproofing for walls Certification Reference.

I authorize the CSTB to inform the above-named distributor of the sanctions taken in accordance with the QB brand Flexible underlays for waterproofing for walls certification standard – relating to the certified products covered herein.

Please find attached a copy of the commitment form of the distributor on behalf of the Company to distribute under the specific commercial brand and/or commercial reference only the certified products that I deliver to them.

I beg you to accept, Sir, the expression of my distinguished consideration.

Date and signature of the legal representative of the holder, applicant for maintenance



FORM LETTER 2B (continued)
QB BRAND – Flexible underlays for waterproofing for walls

DISTRIBUTOR'S COMMITMENT FORM (VISA)
 (to be drawn up on the distributor's letterhead)

I, the undersigned,
 acting as: (Manager Chairman, Chief Executive Officer, etc.)
 whose registered office is located at:
 SIRET number:.....
 hereby commits me to:

- not to make any technical changes that could alter the certified characteristics of the products manufactured by the holder company. Any subsequent changes must be notified to the CSTB in advance for approval, which must also be agreed with the holder;

Identification of products eligible for the QB mark		Specific trademark and/or trade reference requested by the distributor
Certificate No.	Registrant's product description and reference	

- to modify the specific trademarks and/or commercial references referred to above only in agreement with the holder of the right to use the QB trademark and after having previously notified the CSTB by registered letter with acknowledgement of receipt;
- to distribute<under the trademarks> and/or specific commercial references referred to above only the products delivered by the owner company
- not to make any changes to the marking on the products in accordance with the provisions of the QB - Flexible underlays for waterproofing for walls brand certification standard;
- to assist the CSTB in any verification relating to the products covered by this document and their marketing, and to provide it with any documentation referring to these products;
- to apply the measures resulting from the sanctions taken in accordance with the QB - Flexible underlays for waterproofing for walls brand certification standard;
- to inform the holder of any complaint received in relation to the certified products,
- *Select the selected option:*
If payment is taken care of by the distributor: < to pay the amount of the fees provided for in the QB brand tariffs and to make any subsequent payments that will be claimed from me in accordance with the QB brand Flexible underlays for waterproofing for walls certification standard.
or if payment is borne by the holder requesting maintenance: < to ensure the payment of the amount of the fees provided for in the QB brand tariffs and the subsequent payments that will be claimed in accordance with the QB brand Flexible underlays for waterproofing for walls.

I declare that I know and accept the General Requirements of the QB Mark, the QB Mark Certification Standard - and undertake to comply with them and to inform my commercial network throughout the duration of the use of the QB Mark and in particular to comply without restriction or reservation with the decisions taken in accordance with the General Requirements of the QB Mark and the QB Mark Certification Reference - Flexible underlays for waterproofing for walls.

I beg you to accept, Sir, the expression of my distinguished consideration.

Date and signature of the legal representative of the distributor, beneficiary of the maintenance



STANDARD SHEET 3
BRAND QB - Flexible wall membranes

GENERAL INFORMATION SHEET ABOUT THE APPLICANT

MANUFACTURING UNIT:

- Company name: _____
- Address: _____
- Country: _____
- Telephone: _____ Fax: _____
- SIRET N° (1): _____ NAF Code (1): _____
- Name and position of legal representative (2):

- Name and position of correspondent (if different):

- VAT ID number (3): _____
- Email: _____
- Website: _____
- Certified Quality Management System (4): ISO 9001

MANUFACTURER (if different from the manufacturing unit):

- Company name: _____
- Address: _____
- Country: _____
- Telephone: _____ Fax: _____
- SIRET N° (1): _____ NAF Code (1): _____
- Name and position of legal representative (2):

- Name and position of correspondent (if different):

- VAT ID number (3): _____
- Email: _____
- Website: _____

AGENT (if requested):

- Company name: _____
- Address: _____
- Country: _____
- Telephone: _____ Fax: _____
- SIRET N° (1): _____ NAF Code (1): _____
- Name and position of legal representative (2):

- Name and position of correspondent (if different):

- VAT ID number (3): _____
- Email: _____
- Website: _____

(1) Only for French companies.
(2) The legal representative is the person who is legally responsible.
(3) Applies to European manufacturers.
(4) Attach a copy of the certificate.



STANDARD SHEET 4
BRAND QB - Flexible underlays for waterproofing for walls

PRODUCT SHEET
(TO BE COMPLETED PER PRODUCT)

NAME OF APPLICANT/REGISTRANT:

MANUFACTURING UNIT:

TRADE NAME OF THE PRODUCT

- **TRADEMARK:**
- **SPECIFIC BUSINESS REFERENCE (IF APPLICABLE):**
- **TRADE NAME (OPTIONAL):**
- **REQUESTED E.J.C. CLASSIFICATION (SEE TECHNICAL APPENDIX):**
 - o **SPAN DISTANCE:**
 - Installation on continuous support (Esc)
 - Installation between 450 mm centre distance or 400 mm void between uprights (E450)
 - Installation between 650 mm centre distance or 600 mm void between uprights (E650)
 - o **USE:**
 - Flexible rainscreen in closed-joint cladding (Jf)
 - Soft rain screen in open-joint cladding (Jo)
 - Protective membrane in slatted cladding (Jc)
 - o **MAXIMUM EXPOSURE TIME:**
 - 15 days (336h UV) (C1)
 - 3 months (1000h UV) (C2)
 - 6 months (5000h UV) (C3)

SPECIFY THE CHARACTERISTICS TO BE DEFINED

OPTION (if applicable):

Existence of an Environmental Statement: YES NO

If yes: Attached form with the application for certification

Reference of the location where this sheet can be consulted:

Date and signature of applicant/holder



STANDARD SHEET 5
BRAND QB - Flexible underlays for waterproofing for walls

SPECIFIC ELEMENTS TO BE PRODUCED IN THE CONTEXT OF A NEW APPLICATION FOR ADMISSION BY ANY APPLICANT (INDUSTRIALIST, IMPORTER, DISTRIBUTOR, etc.) WHOSE RIGHT OF USE HAS BEEN WITHDRAWN FOLLOWING A SANCTION

1. Case of an act of misleading commercial practice pursuant to Articles L 121-2 to L 121-5 of the Consumer Code (Issuance of a false certificate and/or a false certificate indicating that products are certified by the CSTB when they are not)
 Failure to comply with commitments to the proper use of the certification mark

The applicant is responsible for defining and carrying out any action it deems necessary to remedy in the long term the causes and consequences of its commitments to the proper use of the certification mark.

ACTIONS	AT THE VERY LEAST, EVIDENCE TO BE PROVIDED BY THE APPLICANT TO THE CSTB DEMONSTRATING ITS ACTIONS TAKEN TO REMEDY THE CAUSES AND CONSEQUENCES IN THE LONG TERM	VALIDITY OF EVIDENCE RECEIVED
CURATIVE ACTIONS	<ul style="list-style-type: none"> • List of actors with their full contact details (customers, prospects, technical controllers, etc.) who have been recipients of false certificates/certificates; failing that, the list of stakeholders (customers, prospects, technical controllers, etc.) who have been contacted in the last 24 months. 	<input type="checkbox"/> Submitted List <input type="checkbox"/> List not submitted Feedback:
	<ul style="list-style-type: none"> • List of customers with their full contact details who have received products that have been improperly marked or presented with the certification mark(s); failing that, the list of customers in the last 24 months. 	<input type="checkbox"/> Submitted List <input type="checkbox"/> List not submitted Feedback:
	<ul style="list-style-type: none"> • Written information made by the Applicant's manager informing these actors of the invalidity of the false attestations/certificates to which they have been addressed. 	<i>The CSTB will verify the implementation of the action with 5% of the actors and, at least, with 5 customers and technical inspectors.</i> <input type="checkbox"/> Information produced and corroborated by the actors <input type="checkbox"/> Information not realized or partially realized Feedback:
	<ul style="list-style-type: none"> • Written information made by the Applicant's manager informing customers of products improperly marked or presented with the certification mark(s). 	<i>The CSTB will verify the implementation of the action with 5% of clients and, at a minimum, with 5 clients</i> <input type="checkbox"/> Information produced and corroborated by the actors <input type="checkbox"/> Information not realized or partially realized Feedback:
	<ul style="list-style-type: none"> • Action taken against the person(s) responsible for the formalization and dissemination of false attestations/certificates and/or the delivery of improperly marked products. 	<input type="checkbox"/> Relevant action <input type="checkbox"/> Irrelevant action Feedback:



ACTIONS	AT THE VERY LEAST, EVIDENCE TO BE PROVIDED BY THE APPLICANT TO THE CSTB DEMONSTRATING ITS ACTIONS TAKEN TO REMEDY THE CAUSES AND CONSEQUENCES IN THE LONG TERM	VALIDITY OF EVIDENCE RECEIVED
CORRECTIVE ACTIONS	<ul style="list-style-type: none"> • Proof of information/awareness of all company staff about misleading commercial practices (e.g. signed timesheet, information support, etc.) 	<input type="checkbox"/> Relevant Evidence(s) <input type="checkbox"/> Irrelevant evidence(s) Feedback:
	<ul style="list-style-type: none"> • Ethical Provisions. 	<input type="checkbox"/> Defined <input type="checkbox"/> Undefined Feedback:
	<ul style="list-style-type: none"> • Commitment of all the company's staff to respect the ethical provisions (e.g. employment contract, individual commitment, etc.) 	<input type="checkbox"/> Available Commitments <input type="checkbox"/> Commitments not available Feedback:
	<ul style="list-style-type: none"> • Planning of internal audits of compliance with ethical provisions: * first internal audit planned, at the latest, within three months from the date of the application for admission to the CSTB, * Internal audits scheduled on an annual basis. 	<input type="checkbox"/> Compliant planning <input type="checkbox"/> Non-compliant planning Feedback:
	<ul style="list-style-type: none"> • Letter of commitment from the head of the company to: * give the CSTB's auditor, for a period of two years, access to the contact details of all the recipients of the tenders for a sample interrogation by the CSTB of the documents received; * Accept the annual billing of two additional audit days spread over the year at the scale of the application in force. Note: The purpose of this audit will be to verify the effectiveness of the implementation of the actions, on a documentary basis and in situ. 	<input type="checkbox"/> Letter of Engagement available <input type="checkbox"/> Letter of Commitment not available Feedback:
	<ul style="list-style-type: none"> • give the CSTB's auditor, for a period of two years, access to the complete contact details of all the recipients of the tenders for a sample interrogation by the CSTB of the documents received. 	<i>The CSTB will conduct surveys, for two years from the date of application for admission to the CSTB, with 5% of the recipients of the offers and, at least, with 5 recipients.</i>
PREVENTIVE ACTIONS	<ul style="list-style-type: none"> • If applicable, proof of deployment of the code of ethics in the company's subsidiaries. 	<input type="checkbox"/> Relevant Evidence(s) <input type="checkbox"/> irrelevant evidence(s), Feedback:

- All required actions are available, defined, relevant, or compliant. The application for admission may be submitted.
- Not all required actions are available. The admissibility of the application for admission cannot be pronounced.

ANALYSIS PERFORMED BY (Name of application manager and/or manager):
 DATE: __/__/____ VISA:

VALIDATION BY THE OPERATIONAL DIRECTOR (Name):
 DATE: __/__/____ VISA:



STANDARD SHEET 6

BRAND QB - Flexible underlays for waterproofing for walls

**DOCUMENTS TO BE PROVIDED BY THE APPLICANT FOR AN APPLICATION FOR ADMISSION,
EXTENSION and MAINTENANCE OF THE RIGHT OF USE TO THE QB TRADEMARK FLEXIBLE WALL
MEMBRANES**

- List of raw materials used with manufacturing locations for the various components.
- Composition and specifications of the screen with the table of characteristics and performance to be completed.
- Initial type test reports in accordance with the technical annex of the standard.
- Identification of accessories (tape and/or glue) with adhesion characteristics (peel test of the covers according to *EN 12316-2* and shear strength of the covers according to *EN 12317-2* in new condition and after ageing).
- Factory Control Plan / Control Follow-up (*Tables given as examples*) :
 - On raw materials,
 - In the process of manufacturing if applicable,
 - On finished products.
- Copy of the records of the statistical exploitation of the mechanical properties (on 50 tests on unaged product at intake)
- List of "Site References" to be provided (*)
- Multiple-choice questionnaire (Site visit optional in case of non-satisfaction of the MCQ)
- Organisation of Technical Assistance (identification of the identity providing Technical Assistance in France) – see standard sheet 7 (*)
- Copy of technical documentation (*)
- Copy of ISO 9001 certificate
- Installation instructions (*)
- Labelling template (*)
- CE Marking Declaration of Performance (*)

(*) In the case of an application for maintenance of the Right of Use or a three-year follow-up for the QB Flexible Wall Membranes brand, only these documents are to be provided.



STANDARD SHEET 7

BRAND QB - Flexible underlays for waterproofing for walls

TECHNICAL ASSISTANCE EVALUATION SHEET FOR A FIRST APPLICATION FOR THE RIGHT OF USE TO THE QB FLEXIBLE WALL MEMBRANES TRADEMARK

TECHNICAL ASSISTANCE:

- Society:
- Telephone:
- Address:
- Technical Support contact:
- Technical Assistance Structure:
- Quantity of screen purchased:
- End user:
- Name of the installer responsible for the installation of the screen:
- Number of construction sites visited:
- Visit report or photos of the construction site:
- Number of customer complaints:



Part 4 Prices

The purpose of this section is to define the amount of benefits related to QB certification and to describe the methods of recovery.

The QB certification includes the following services:

- Management (development and implementation of an application, processing of the application, operation of certification application);
- Right to use the QB trademark;
- Tests; Levy;
- Audits;
- Additional or additional checks;
- Travel Expenses

4.1 Services related to QB certification

Nature of the service	Definition of the benefit	Recovery of benefits
<u>Management:</u> Development and implementation of an application, examination of the certification application	Participation in the implementation of the QB brand, including the development of the certification framework. Services including the examination of application files, relations with applicants, laboratories, auditors and the evaluation of control results.	➤ <i>Initial application / extension request: See § 4.2.1.</i>
<u>Management:</u> How the certification app works	Services including the management of certified product files, relations with holders, laboratories, auditors, the publication of certified data, certificates, the evaluation of control results, sectoral communication actions.	➤ <i>Monitoring: See § 4.2.2.</i>
Right to use the QB trademark	This right of use contributes to: - In defense of the QB brand: ➔ trademark registration and protection, legal advice, handling of appeals and abusive uses (legal services); - generic promotion of the QB brand; - the general functioning of the QB brand (governance, etc.)	➤ <i>Initial application / extension request: See § 4.2.1.</i> ➤ <i>Monitoring: See § 4.2.2</i>



Nature of the service	Definition of the benefit	Terms & Conditions
Tests	Laboratory testing services Services including preparation and self-collection	Laboratory rates are available upon request. An amount of less than half a day will not be charged if the direct debit is made outside of the audit. The applicant/holder shall provide the samples free of charge and make them available at the address of the laboratory. Import duties and taxes are the responsibility of the test applicant; The applicant pays all duties and taxes prior to shipment of the samples. ➤ <i>Initial application / extension request: See § 4.2.1.</i> ➤ <i>Monitoring: See § 4.2.2.</i>
Audit	Services including the preparation of the audit, the audit itself, the report, and, where applicable, the follow-up of the corrective actions mentioned in the variance sheets.	➤ <i>Initial application / extension request: See § 4.2.1.</i> ➤ <i>Monitoring: See § 4.2.2.</i>
Additional/Additional Controls	Services resulting from additional controls (audit or additional verification tests) that may be required as a result of deficiencies or anomalies detected by routine controls.	These services are the responsibility of the applicant/holder according to the rates in force, broadcast on demand. The costs of the additional / additional checks are invoiced and paid before the services are performed.
Travel Expenses		If they are not included in the "audit" service, travel expenses are invoiced after each audit has been carried out.

4.2 Recovery of benefits

4.2.1 INITIAL APPLICATION / EXTENSION REQUEST

With its application for certification (initial application or extension), the Applicant submits an advance of 100% of the costs relating to management, testing, sampling, and audit services.

These services are invoiced at the time of admission (Right of Use Agreement). This is a lump sum.

These costs remain acquired even if the right to use the QB trademark is not granted, extended or if the application is abandoned during the investigation.

When the QB trademark is granted during the year, the amount of the right of use is calculated on a pro rata basis for the months following the decision granting the right of use.

4.2.2 MONITORING

The fees relating to the annual services of management, audit, testing, sampling and right of use of the QB trademark are invoiced during the first quarter of each year and remain acquired in the event of non-renewal, withdrawal, cancellation, or suspension of the right to use the QB trademark during the year.



If they are not included in the "audit" service, travel expenses are invoiced after each audit has been carried out.

4.2.3 NON-PAYMENT OF SUMS DUE

The applicant or holder of the right to use the QB trademark must pay all fees under the prescribed conditions. Any failure on its part will hinder the CSTB's exercise of its control and intervention responsibilities under this certification standard.

If a first formal notice notified by registered letter with acknowledgment of receipt does not determine, within a period of one month, the payment of all sums due, any sanction provided for in the General Requirements of the QB brand may be taken for all the products admitted by the holder.

4.3 Cancellation of an audit or trial by the applicant/holder

For any audit cancelled by the applicant/holder, less than 30 days before the date of the audit, the CSTB may charge a lump sum as damages:

- invoice of 25% of the audit if cancelled 1 month before the audit;
- invoice of 50% of the audit if cancelled between 1 month and 15 days before the audit;
- Invoice of 75% of the audit if cancelled less than 15 days before the audit.

If the travel and accommodation expenses incurred by the CSTB are not covered by a lump sum, they will also be invoiced if the CSTB cannot be reimbursed.

The applicant/holder is not required to pay this lump sum if he can prove that this cancellation is the direct consequence of a case of force majeure as defined in French law.

4.4 Prices

The tariffs are subject to an annual review, in the form of a scale published by the CSTB. This revision is decided after consultation with the Special Committee.

The refusal by a holder of the annual revision of the tariffs entails, in fact, a voluntary termination on its part of the certification contract and the right to use the QB mark for its certified products.



CERTIFICATION

QB Certification

Technical Appendix: Flexible underlays for waterproofing for walls



Identification number: QB38
Revision No.: 04
Effective Date: 15/04/2024



This document was prepared on the initiative and under the direction of the CSTB, which gathered the views of all interested parties. Any reproduction or representation, in whole or in part, of this document as well as any use of all or part of this document for the purposes of evaluation, certification and testing, carried out without the prior written consent of the CSTB is not authorized.



TABLE OF CONTENTS

Part 1	Definition of the E.J.C classification.....	4
Part 2	Detailed Certified Features	5
Part 3	Technical Specifications.....	8
Part 4	Certification Testing.....	9



Part 1

Definition of the E.J.C classification

Performance classification	
E.J.C.	
The ranking is characterized by the combination of the three letters E, J, C, and different indices corresponding to a level of performance or quality.	
Characteristic	Description
E	<p>E characterizes the type of substrate on which the flexible wall membrane can be installed according to its mechanical strength:</p> <ul style="list-style-type: none"> ▪ Esc: corresponds to the installation of the flexible wall membrane on a continuous support (e.g. presence of a stability or bracing wall); ▪ E450: corresponds to the installation of a flexible wall membrane on a discontinuous support with a distance between rows of fasteners of 450 mm (void between uprights ≤ 400 mm); ▪ E650: corresponds to the installation of a flexible wall membrane on a discontinuous support with a 650 mm centre distance between rows of fasteners (void between uprights ≤ 600 mm).
J	<p>J characterizes the type of exterior cladding used on the screen:</p> <ul style="list-style-type: none"> ▪ Jo: corresponds to a flexible rainscreen installed at the back of an open-joint cladding. <i>Definition of "open joint": The cladding with open joints ≤ 10 mm and the surface of the open joints surrounding the cladding skin element must be ≤ 1.5% of the surface of the element as specified by the Information Note of GS2.2 n°6 - version 2 "Definitions, requirements and criteria of traditionality applicable to added cladding" (CSTB Booklet 3251_v2 of December 2017), with an increased joint width of 8 to 10 mm.</i> ▪ Jf: corresponds to a flexible rainscreen installed at the back of a closed joint cladding. ▪ JC: corresponds to a protective membrane installed at the back of an external cladding whose characteristics are defined by the specific evaluation of the membrane (type ATec, DTA, ATEEx, etc.).
C	<p>C characterizes the maximum exposure time of the membrane in the construction phase before it is covered by the external cladding:</p> <ul style="list-style-type: none"> ▪ C1: membrane has been aged for 336 h UV at 50°C and exposed for 90 days at 70°C in accordance with the NF EN 13859-2 standard. Membrane coverage is limited to 15 days. ▪ C2: membrane has been aged for 1000 h UV at 50°C and exposed for 90 days at 70°C in accordance with the methodology described in this Technical Document. The covering of the membrane is limited to 3 months. ▪ C3: membrane has been aged for 5000 h UV at 50°C and exposed for 90 days at 70°C in accordance with standard NF EN 13859-2 – Annex C or the protective membrane has been aged in accordance with ATec or DTA or ATEEx. The covering of the soft rain barrier or protective membrane is limited to 6 months.



Part 2 Detailed Certified Features

The certified characteristics are:

Ranking		Meaning	Tests/Conditions	Requirements
E	Esc	Installation on continuous substrate	Tensile Strength (LxT) EN 12311-1 (amended by Annex A of standard NF EN 13859-2)	Mint condition ≥ 100 N/50 mm After Aging (1) or (2) or (3) ≥ 70% of the initial value With a minimum of 70 N/50 mm
			Nail Tear (LxT) EN 12310-1 (amended by Annex B of standard NF EN 13859-2)	Mint condition ≥ 75 N
	E450	450 mm centre distance between fastener rows (gap between pillar ≤ 400 mm)	Tensile Strength (LxT) EN 12311-1 (amended by Annex A of standard NF EN 13859-2)	Mint condition ≥ 100 N/50 mm After Aging (1) or (2) or (3) ≥ 70% of the initial value With a minimum of 70 N/50 mm
			Nail Tear (LxT) EN 12310-1 (amended by Annex B of standard NF EN 13859-2)	Mint condition ≥ 75 N
	E650	650 mm centre distance between fastener rows (gap between pillars ≤ 600 mm)	Tensile Strength (LxT) EN 12311-1 (amended by Annex A of standard NF EN 13859-2)	Mint condition ≥ 140 N/50 mm After Aging (1) or (2) or (3) ≥ 70% of the initial value With a minimum of 100 N/50 mm
			Nail Tear (LxT) EN 12310-1 (amended by Annex B of standard NF EN 13859-2)	Mint condition ≥ 100 N
J	Jo	Behind open-joint cladding	Tensile Strength (LxT) EN 12311-1 (amended by Annex A of standard NF EN 13859-2)	After Aging (3) E Rating & Waterproof (W1)
	Jf	Closed joint cladding behind	and watertightness EN 1928:2000 (Method A modified by § 5.2.3 of NF EN 13859-2)	After Aging (1) or (2) E Rating & Waterproof (W1)
	Jc	Behind an exterior cladding defined in a Technical Approval, DTA or ATEX	Tensile Strength (LxT) EN 12311-1 (amended by Annex A of standard NF EN 13859-2) and watertightness EN 1928:2000 (Method A modified by § 5.2.3 of NF EN 13859-2)	After Aging (3) Water Protection Membrane: C3 Rating and Valid Technical Opinion, DTA or ATEX
C	C1	On-site membrane covering time ≤ 15 days	Tensile Strength (LxT) EN 12311-1 (amended by Annex A of standard NF EN 13859-2) and watertightness EN 1928:2000 (Method A modified by § 5.2.3 of NF EN 13859-2)	After Aging (1) E Rating & Waterproof (W1)
	C2	On-site membrane covering time ≤ 3 months		After Aging (2) E Rating & Waterproof (W1)
	C3	On-site membrane covering time ≤ 6 months		After Aging (3) E Rating & Waterproof (W1)

(LxT) = Longitudinal and transverse.

(1) Ageing for 336 hours UV at 50°C and exposure for 90 days at 70°C in accordance with the NF EN 13859-2 standard.
 (2) Ageing for 1000 h UV at 50°C and exposure for 90 days at 70°C in accordance with the method described in the Technical Document DT99038-01.
 (3) Ageing for 5000 h UV at 50°C and exposure for 90 days at 70°C in accordance with standard NF EN 13859-2 – Annex C.

Table 1. E.J.C. Classification

Adhesive Strips	Meaning	Tests	Support	State	Requirements
Integrated (Rain screen)	For cladding with open joints, closed joints	Shear strength EN 12317-2	Membrane on membrane (convenience)	Mint condition	100 N/50 mm
		Peel strength according to EN 12316-2		After Aging (6)	≥ 50% of the initial value With a minimum of 70 N/50 mm
				Mint Condition (5)	15 N and 100% cohesive break (complete break in the adhesive).
Integrated (Water Protection Membrane)	Evaluation of the resistance of adhesive strips to heat exposure (non-UV exposed strips) The membrane and belt system are behind a coating defined in Technical Approval, DTA or ATEX	Shear strength EN 12317-2 and NF EN 13859-2 or according to the method defined in Technical Approval, DTA or ATEX	Membrane on membrane (convenience)	Mint condition	100 N/50 mm
		Peel Strength EN 12317-2 and NF EN 13859-2 or according to the method defined in Technical Approval, DTA or ATEX		After Aging (4)	≥ 50% of the initial value With a minimum of 70 N/50 mm
				Mint Condition (3)	15 N and 100% cohesive break (complete break in the adhesive).

(1) Cladding with open joints and covering for a maximum of 3 months (with open joints ≤ 10 mm and the surface of the open joints surrounding the cladding skin element must be ≤ 1.5% of the surface of the element according to § 2.3 of Annex A of the NF DTU 41.2 P1-1 standard).

(2) Closed joint cladding and covering for a maximum of 15 days with closed joint cladding: 0% opening.

(3) Shear and peeling tests on junctions can be carried out by the FCBA laboratory, which has signed a reconnaissance contract with the CSTB. This contract precisely defines the criteria for this recognition of an ISO 17025 accredited laboratory.

(4) Reference materials are defined in DTU 31.2, Part 1.2, Annex D.

(5) New conditions for coating: 14 days at 23°C (+/-2°C) and 50%RH (+/-10%RH).

(6) Thermal aging consists of several steps:

- 14 days at 23°C (+/-2°C) and 50%RH (+/-10%RH);
- 4 days at 70°C (+/-2°C);
- 1 day at 23°C (+/-2°C) and 50%RH (+/-10%RH).

(7) Ageing for 336 hours UV at 50°C and exposure for 90 days at 70°C in accordance with the NF EN 13859-2 standard.

(8) Aging for 1000 h UV at 50°C and exposure for 90 days at 70°C according to the method described in Technical Document DT99038-01.

(9) Ageing for 5000 h UV at 50°C and exposure for 90 days at 70°C in accordance with standard NF EN 13859-2 – Annex C.

Table 2. Certified Features for Integrated Adhesive Strips



Adhesive Strips	Meaning	Tests	Support	State	Requirements	
Associated with or Reported (Rain screen)	For open-joint cladding (1)	Shear strength EN 12317-2	Reference materials (3) (4)	Mint condition	100 N/50 mm	
				After Aging (6) and (9)	≥ 50% of the initial value With a minimum of 70 N/50 mm	
		Peel strength according to EN 12316-2	Membrane on membrane (convenience)	Mint condition	100 N/50 mm	
				After Aging (6) and (9)	≥ 50% of the initial value With a minimum of 70 N/50 mm	
	For cladding with closed joints (2)	Shear strength EN 12317-2	Reference materials (3) (4)	Mint Condition (5)	15 N and 100% cohesive break (complete break in the adhesive).	
				Membrane on membrane (convenience)	Mint Condition (5)	15 N and 100% cohesive break (complete break in the adhesive).
		Peel strength according to EN 12316-2	Reference materials (3) (4)	Mint condition	40 N/50 mm	
				After Aging (6) and (7) or (8)	≥ 50% of the initial value With a minimum of 30 N/50 mm	
Associated with or Reported (Water Protection Membranes)	Evaluation of the resistance of adhesive strips to UV exposure because adhesive strips see UV	Shear strength EN 12317-2 and NF EN 13859-2 or according to the method defined in Technical Approval, DTA or ATEX	Reference materials (1) (2)	Mint condition	100 N/50 mm	
				After Aging (4) and (5)	≥ 50% of the initial value With a minimum of 70 N/50 mm	
		The membrane and belt system are behind a coating defined in Technical Approval, DTA or ATEX	Peel Strength EN 12317-2 and NF EN 13859-2 Or according to the method defined in Technical Approval, DTA or ATEX	Membrane on membrane (convenience)	Mint condition	100 N/50 mm
					After Aging (4) and (5)	≥ 50% of the initial value With a minimum of 70 N/50 mm
			Reference materials (1) (2)	Mint Condition (3)	15 N and 100% cohesive break (complete break in the adhesive).	
				Membrane on membrane (convenience)	Mint Condition (3)	15 N and 100% cohesive break (complete break in the adhesive).
					Mint condition	100 N/50 mm
					After Aging (4) and (5)	≥ 50% of the initial value With a minimum of 70 N/50 mm
<p>(1) Cladding with open joints and covering for a maximum of 3 months (with open joints ≤ 10 mm and the surface of the open joints surrounding the cladding skin element must be ≤ 1.5% of the surface of the element according to § 2.3 of Annex A of the NF DTU 41.2 P1-1 standard).</p> <p>(2) Closed joint cladding and covering for a maximum of 15 days with closed joint cladding: 0% opening.</p> <p>(3) Shear and peeling tests on junctions can be carried out by the FCBA laboratory, which has signed a reconnaissance contract with the CSTB. This contract precisely defines the criteria for this recognition of an ISO 17025 accredited laboratory.</p> <p>(4) Reference materials are defined in DTU 31.2, Part 1.2, Annex D.</p> <p>(5) New conditions for coating: 14 days at 23°C (+/-2°C) and 50%RH (+/-10%RH).</p> <p>(6) Thermal aging consists of several steps: - 14 days at 23°C (+/-2°C) and 50%RH (+/-10%RH); - 4 days at 70°C (+/-2°C); - 1 day at 23°C (+/-2°C) and 50%RH (+/-10%RH).</p> <p>(7) Ageing for 336 hours UV at 50°C and exposure for 90 days at 70°C in accordance with the NF EN 13859-2 standard.</p> <p>(8) Ageing for 1000 h UV at 50°C and exposure for 90 days at 70°C according to the method described in Technical Document DT99038-01.</p> <p>(9) Ageing for 5000 h UV at 50°C and exposure for 90 days at 70°C in accordance with standard NF EN 13859-2 – Annex C.</p>						

Table 3. Certified Characteristics for Adhesive Tape Inserts



Part 3 Technical Specifications

The technical specifications of the rainscreen membranes are:

Characteristics		U	Norm	Product Status	Securities	Tolerances	Minimum frequency of factory production checks <i>Note 1, Note 2</i>
Mass per unit area		g/m ²	NF EN 13859-2 § 5.2.1	Mint condition	VDF	VDF	Once per team
Resistance to water penetration		-	NF EN 13859-2 § 5.2.3	Mint condition	W1	-	Once per 40 teams
				After Aging (1)	W1	-	Once every 2 years (3)
Water vapour transmission property in mint condition (Sd)		M	NF EN 13859-2 § 5.2.5 (2 methods)	Mint condition	≤ 0.18	-	Once per 40 teams
Tensile property		N/50 mm	NF EN 13859-2 § 5.2.7	Mint condition	E Rating (1)	VDF	Once per 10 teams
				After Aging (1)	E Rating (1)	VDF	Once every 2 years (3)
Elongation property		%	NF EN 13859-2 § 5.2.7	Mint condition	VDF	VDF	Once per 10 teams
				After Aging (1)	VDF	VDF	
Tear resistance (nail)		N	NF EN 13859-2 § 5.2.8	Mint condition	E Rating (1)	VDF	Once per 40 teams
Dimensional Stability		%	NF EN 13859-2 § 5.2.9	Mint condition	-1.5 < Stab. Sun < +1.5	-	Once a year
Flexibility at low temperatures		°C	NF EN 13859-2 § 5.2.10	Mint condition	T ≤ -5	-	Once a year
Built-in adhesive strips (convenience)	Shear strength of junctions	N/50 mm	NF DTU 31.2 Part 1.2 Schedule D or according to the method defined in Technical Approval, DTA or ATEX	Mint condition	(2)	-	Once a year
	Peel strength of joints	N		Mint condition	(2)	-	Once a year
Adhesive strips added (convenience)	Shear strength of junctions	N/50 mm	NF DTU 31.2 Part 1.2 Schedule D or according to the method defined in Technical Approval, DTA or ATEX	Mint condition	(2)	-	Once a year
	Peel strength of joints	N		Mint condition	(2)	-	Once a year

VDF: Value declared by the manufacturer.

(1) See Table 1.

(2) See Table 2.

(3) Year N+2 at the ISO 17025 accredited laboratory at the manufacturer's choice and year N+4 at the QB brand laboratory.

Note 1: The characteristics of tensile strength and nail tear in both directions shall be statistically analysed with at least the following values: arithmetic mean, standard deviation, minimum value. The dispersion of the results will be taken into account in the verification of compliance with the thresholds defined by the brand standard.

Note 2: The manufacturer's self-monitoring records are to be kept in record for 10 years.

Table 4. Technical specifications and control plan



Part 4 Certification Testing

Product certification testing is defined in the table below.

Type testing may be carried out in the CSTB laboratory or any other external laboratory accredited ISO 17025 by a member body of the European Cooperation for Accreditation (EA) or periodically evaluated according to the requirements of the ISO 17025 standard by a qualified internal auditor of the CSTB.

Tests Rainscreen membranes	U	Test Standard	Product Condition	Initial Testing (Admission) Note 1	Audit (Admission/Follow-up) Note 2	Brand Lab (follow-up) Note 2	
				Initial	§1.2 of the QB38 standard	Annual	Every 4 years (7)
Mass per unit area	g/m ²	EN 1849-1 (bitumen) EN 1849-2 (other material)	Prestine	0	0	0	
Resistance to water penetration	W1	EN 1928:2000 Method A modified by § 5.2.3 of the standard NF EN 13859-2	Prestine	0	0	0	
			After Aging (1)	0			0
Water Vapor Transmission Property (3)	M	IN 1931 EN ISO 12572 conditions C	Prestine	0	0	0	
Tensile property Tensile Force & Elongation at Break (4)	N/50 mm %	EN 12311-1 amended by Annex A of standard NF EN 13859-2	Prestine	0	0	0	
			After Aging (1)	0			0
Nail Tear Strength (4)	N	EN 12310-1 amended by Annex B of standard NF EN 13859-2	Prestine	0	0	0	
Dimensional Stability	%	EN 1107-1 (bitumen) EN 1107-2 (other material)	Prestine	0	0	0	
Flexibility at low temperatures	°C	EN 1109	Prestine	0	0	0	
Built-in adhesive strips (Montage presented in DT99038-01)	Shear of joints (convenience) N/50 mm	EN 12317-2	Prestine	0	0	0	
			After Aging (2)	0			
	Peeling of the joints (convenience) N	EN 12316-2	Prestine	0	0	0	
Adhesive Inserts (5) (6) (Montage presented in DT99038-01)	Shear of Juncions (Reference Supports) N/50 mm	EN 12317-2	Prestine	0			
			After Aging (2)	0			
	Peeling of Joints (Reference Supports) N	EN 12316-2	Prestine	0			
			Prestine	0	0	0	
	Shear of joints (convenience) N/50 mm	EN 12317-2	After Aging (2)	0			0
Peeling of the joints (convenience) N			EN 12316-2	Prestine	0	0	0

QB Certification Administrative Management Annex
QB 38 Certification Repository
Revision No.: 04



Greyed out = not affected.

- (1) See Table 1 – Classification C.
- (2) See Tables 2 and 3 – Points 7, 8 and 9.
- (3) The transmission property of water vapour and its durability may, in the event of a query from the certification body, be presented to the members of the Certification Committee.
- (4) The tests that will be carried out during the follow-up audits and subsequently under the responsibility of the brand's laboratory from the samples are to be carried out on each series of five specimens in both directions.
- (5) Shear and peeling tests on junctions can be carried out by the FCBA laboratory, which has signed a reconnaissance contract with the CSTB. This contract precisely defines the criteria for this recognition of an ISO 17025 accredited laboratory. See Figures 1 and 2 for test set-up.
- (6) In the case of an application for the integration of adhesives, by the holder or the distributor, which has already been the subject of the "CTB Components and Systems" certification, peeling and shearing tests will be carried out by the certifying body, CSTB, on the QB38 certified membrane during the annual monitoring.
- (7) Year N+2 at the ISO 17025 accredited laboratory at the manufacturer's choice and year N+4 at the QB brand laboratory.

Note 1: In the context of an application for the right of use of the QB 38 trademark for flexible wall membranes (covered by the EN 13859-2 standard), the type tests carried out within the framework of the EN 13859-1 standard for the QB 25 application of flexible roof underlays may be taken into account when applying.

Note 2: If one or more of an individual value is below the requirements, the minimum one-sided confidence interval of the 95% mean (5% fractile) is calculated according to ISO 2602 and then compared to the certified value.

Table 5. Certification Testing on Rainscreen Membranes